



DAUTEL

LIFTER

FOLDER

SLIDER

Tail lifts
for every application
and industry

Contents

This manual is intended to provide you with valuable information on selecting a model, its proper use as well as the product advantages. The product features described may vary according to the model. The specified net-weights can be used as a reference value and may differ according to mounting situation because we deliver tailored lifting units with different lifting arms and mounting-plates for every mounting case.

DAUTEL offers many industry-specific solutions: From the construction of transporters with a loading capacity of 500 kg to heavyweights of 3,000 kg with a load centre of 1,000 mm. We offer special solutions for trailers, semi-trailers, and HGVs

with low and normal towing hitch and accessible versions of **DAUTEL SLIDER** DS VA/VB.

Due to its modular design, the proven **DAUTEL LIFTER** technology was also used in the **DAUTEL FOLDER** and the suspended **DAUTEL SLIDER**.

DAUTEL , experience, modern production,		DAUTEL FOLDER	50 – 51
DAUTEL in Europe	2–7	DAUTEL LIFTERFLEX/SLIDERFLEX	52 – 53
DAUTEL LIFTER , Lifting unit		DAUTEL SLIDER DS 750/950VE	54 – 55
Quality characteristics	8 – 14	DAUTEL SLIDER for	
Extremely quiet operation	15	HGVs with BDF interchangeable bodies	56 – 57
Optimal corrosion protection	16	DAUTEL SLIDER for HGVs	58 – 61
DAUTEL LIFTER for trailers	17	DAUTEL SLIDER 1500/2000VT XXL	
DAUTEL platform system/ anti roll protection	18 – 23	for volume transports	62 – 63
DAUTEL securing the load	24	DAUTEL SLIDER for semi-trailers	64 – 65
Electronic charging line	25	Additional equipment	66 – 67
Delivery program	26	For every use in every industry	68
How to determine the correct load capacity	27	Recommended HGV equipment	69
DAUTEL LIFTER for original van	28 – 29	To request a quote	70
DAUTEL LIFTER DL 500 – 3000S	30 – 47	Technical specifications	71 – 73
DAUTEL LIFTER for HGVs with Low coupling	48 – 49	DAUTEL Your Partner	74

DAUTEL has developed
and produced tail-gate lifts for over 60 years

Tradition and Advancement

A large number of intelligent solutions combined with high-quality materials sets new standards, for example:

- Suspended tail lifts
- Waterproof plastic case for external operation
- Easy and logical operation
- 2-point foot control accessible under load
- **DAUTEL** Check control steering
- Low-maintenance compound bearing bushes
- Separate control circuits for external foot control operation



Modern Production



DAUTEL in Europe

Italy • DAUTEL s.r.l. • Via Marzabotto 59 • 20037 Paderno Dugnano Mi

Tel. +39 029 9042343 · Fax +39 029 1088741 · info@dautel.it

Netherlands • Johan Tukker · Tel. +31 653 904800 · j.tukker@dautel.nl

Austria • Gerald Sallaberger · Tel. +43 664 2438078

gerald.sallaberger@dautel.de

Switzerland • DAUTEL AG · transport rationalization · Mülibach 203 · 8217 Wilchingen

Tel. +41 5268 70838 · Fax +41 5268 70820 · info@dautel-cargotech.ch

We also work together with general agencies in countries other than these.



Typical **DAUTEL** –
reliable, fail-safe, robust

Typical **DAUTEL**

- Compact high-performance, lightweight hoist
- Intelligent construction, high-quality materials
- Simple, logical and fail-safe operation
- Low maintenance and easy to service
- 24-month guarantee and, optionally, 36-month
- Extensive service network throughout Europe

The **DAUTEL** *LIFTER*, *FOLDER* and *SLIDER* substantially exceed the overload capacity of the nominal load in accordance with EC directive EN 1756-1 by a factor of 2.1. TÜV tested.

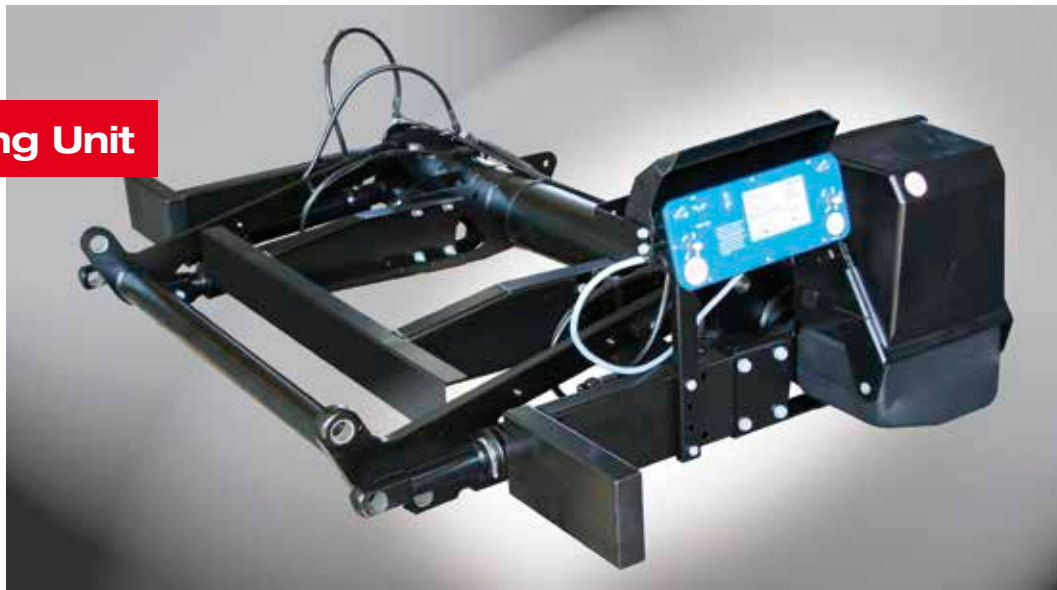


Low net weight

Compact High Performance Lifting Unit

The lifting unit with 2 lifting cylinders and 2 double-acting tilting cylinders with reinforced chrome-plated piston rods is extremely torsion-resistant and highly durable, designed in a round bracing tube construction with high clearance and a 3-part underride guard. The platform opens hydraulically, even when the HGV is turned off.

Plastic bellows and protective tubes protect the piston rods and the hydraulic cylinder seals.



Hydraulic cylinders

Powerful and Long-Lasting

The hydraulic cylinders are some of the most important components. Therefore, we place great value on the design, double guide and double sealing system from brandname manufacturers, and reinforced chrome-plated piston rods. Plastic bellows and protective tubes protect the piston rods and hydraulic cylinder seals from dirt and stone chippings.



Service-friendly drive

Guaranteed All Round Safety

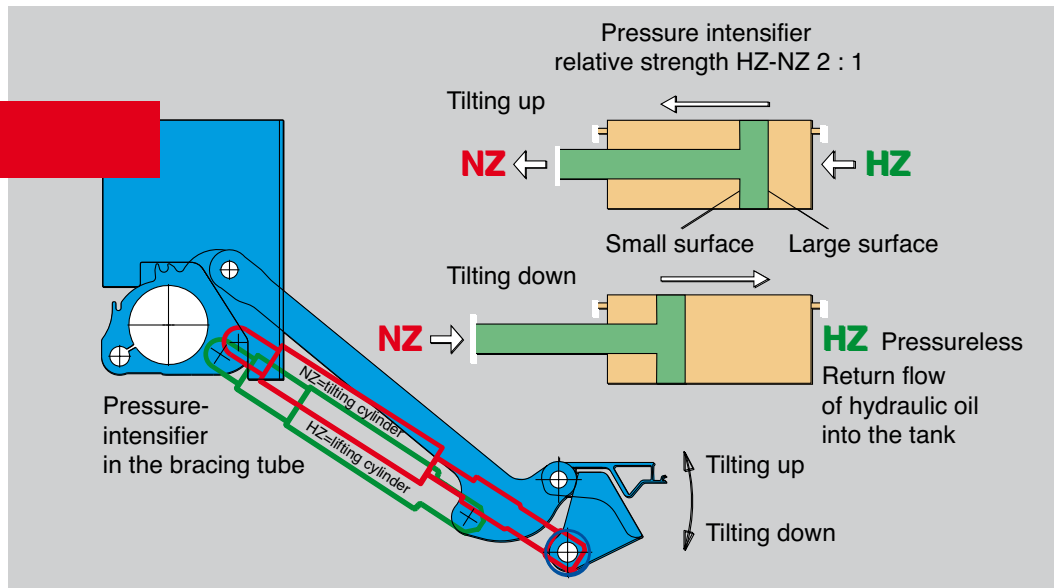
The low-noise BOSCH drive unit 24 volt with 2 kW motor and thermal protective switch from DL 1000, (DL 750/950A/B, DL 100 and DL 1500L also 12 volt), in direction of travel, is protected against moisture and stone chip-pings. All lines are easily accessible outside of the bracing tube. The hydraulic hoses, made from thermoplastic with stainless zinc-nickel fittings, are especially durable. High-quality components and a double safety control system guarantee maximum operational reliability. Even if the foot-control fails, operation can still continue using the external controls because they have separate control circuits. Additional manual emergency operation is possible by means of the cable bridge. Only the easily replaceable circuit logic with flasher unit is an electronic component.



Powerful, safe

Hydraulic Downtilting

Automatic platform downtilt onto the ground plus powerful resetting when lifting = double security through position-dependent activation of the pressure transducer.



Simply logical:

Simple Operation

The ergonomically designed external controls are protected from dirt in a plastic casing with a cover on the underride guard and may be optionally installed on the right side of the vehicle. The waterproof toggle switches with spring contact are particularly fail-safe – and are even easy to operate with gloves.

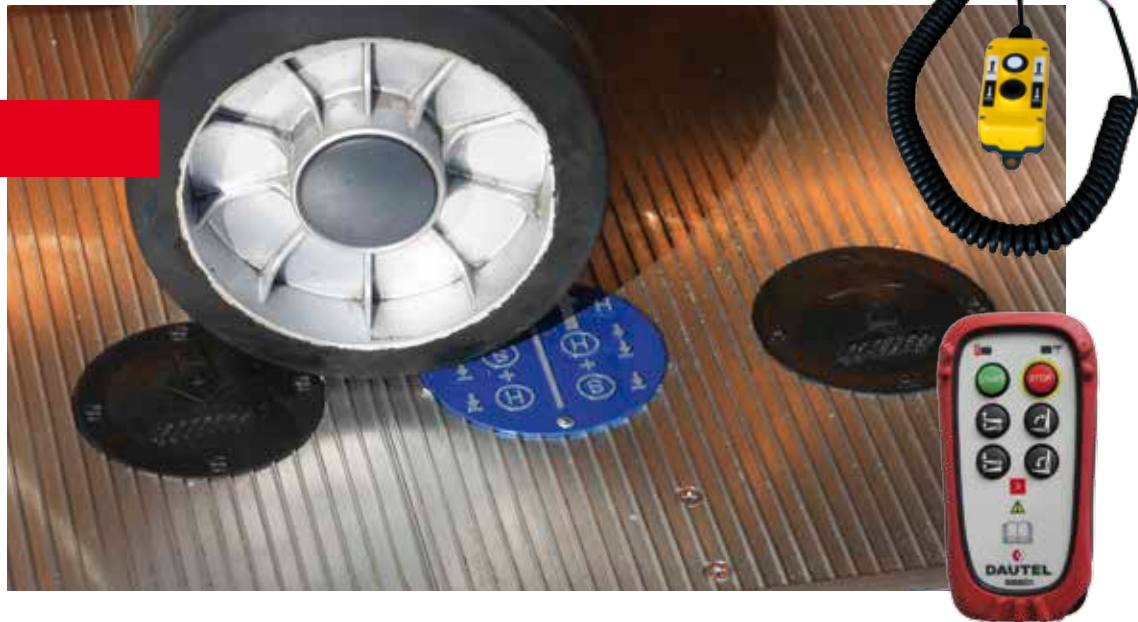
DAUTEL LIFTER, **FOLDER** and **SLIDER** are equipped with a **voltage monitoring system for the truck batteries**. If the voltage drops below a limit value, the flashing frequency of the platform flashing lights changes. The foot switch/spiral cable remote control does not have a function. The device can be controlled using the external control. This is how the user recognises that he should first start the truck motor and then continue or end the charging procedure.



Accessible under load

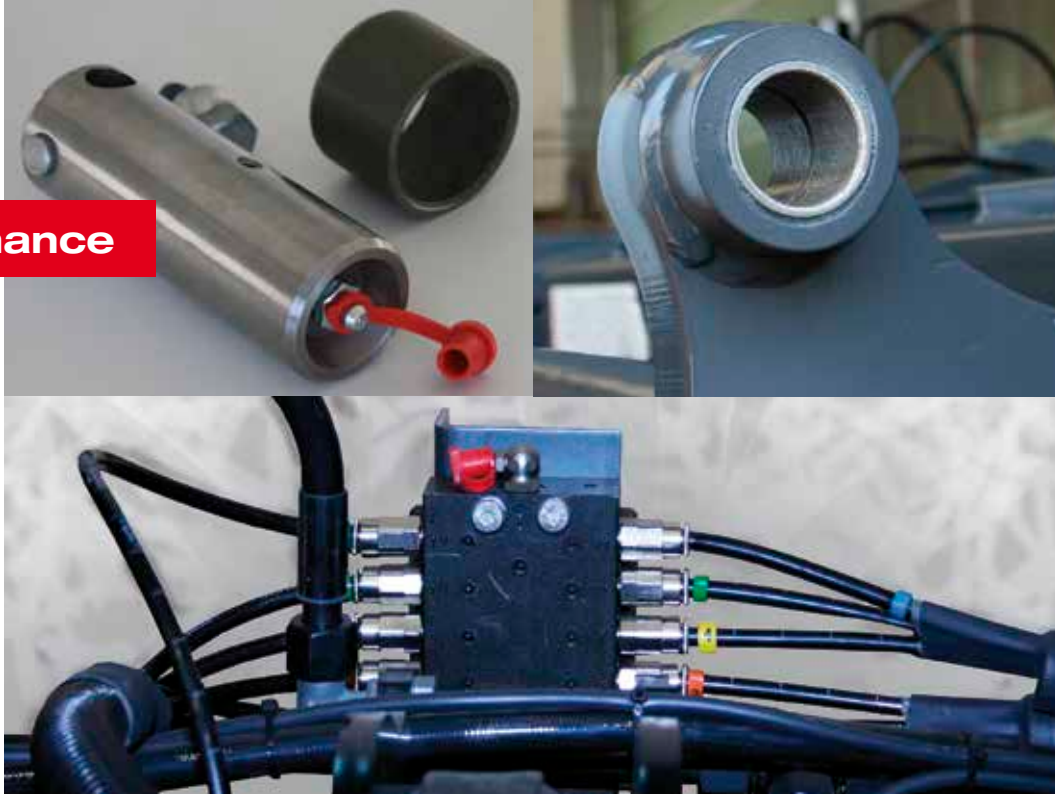
2-Point Foot Control

The unique 2-point foot control, best proven over more than 25 years, is recessed into the platform. Contact is ensured by moisture insensitive proximity switches and is accessible under load. A spiral cable remote control or wireless remote with safety point can optionally be used. Observe the safety instructions in accordance with the operating instructions.



Long-Lasting and Low Maintenance

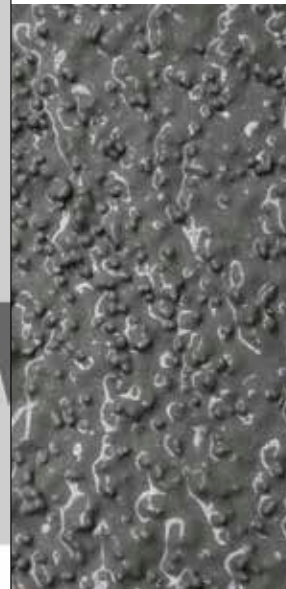
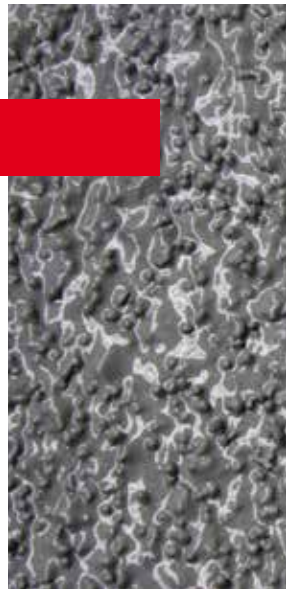
DAUTEL *LIFTER*, *FOLDER* and *SLIDER* are equipped with low-maintenance, Duo long-life floating bearings and large bearing surfaces, with 35 mm pin diameters for **DAUTEL** *LIFTER* as of DL 1000.



Extremely Quiet Operation

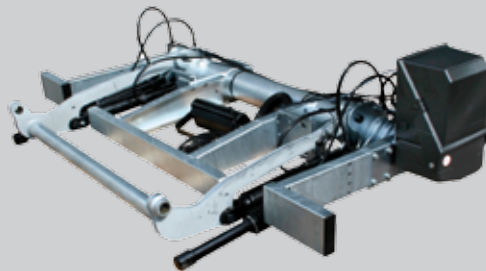
DAUTEL *LIFTER*, *FOLDER* and *SLIDER* are very quiet as standard. A powerful 3kW motor is also available for the DL 2000S, DS 1500VA and DS 2000VA as an option. The “Piek-Certificaat” confirms an operating noise of 59 dB (A) for **DAUTEL**, in conjunction with a noise dampening platform coating and **DAUTEL** sealing system. This means that night deliveries between 11.00 pm and 7.00 am are possible in the Netherlands.

The platform can be equipped with an optional noise damping platform coating.



Optimal Corrosion Protection

The steel parts are pretreated and lacquered with a thick layer of KTL, similar to RAL 9005 black, which offered 1,000 hours of resistance in the salt spray test. For users with higher requirements **DAUTEL** offers an additional optional lacquering in a RAL colour. As standard, the **DAUTEL LIFTER** DL 500K, DL 750A, DL 950A and optionally the **DAUTEL LIFTER** DL 750B, DL 950B, DL 1500S – DL 2000S as well as the **DAUTEL SLIDER** DS-VA with hot-dip galvanized hoist gear and the **DAUTEL SLIDER** VA are offered with a 2-part platform with hot-dip galvanized lift (bracing tube, lifting arms, underride protection and suspension plates).

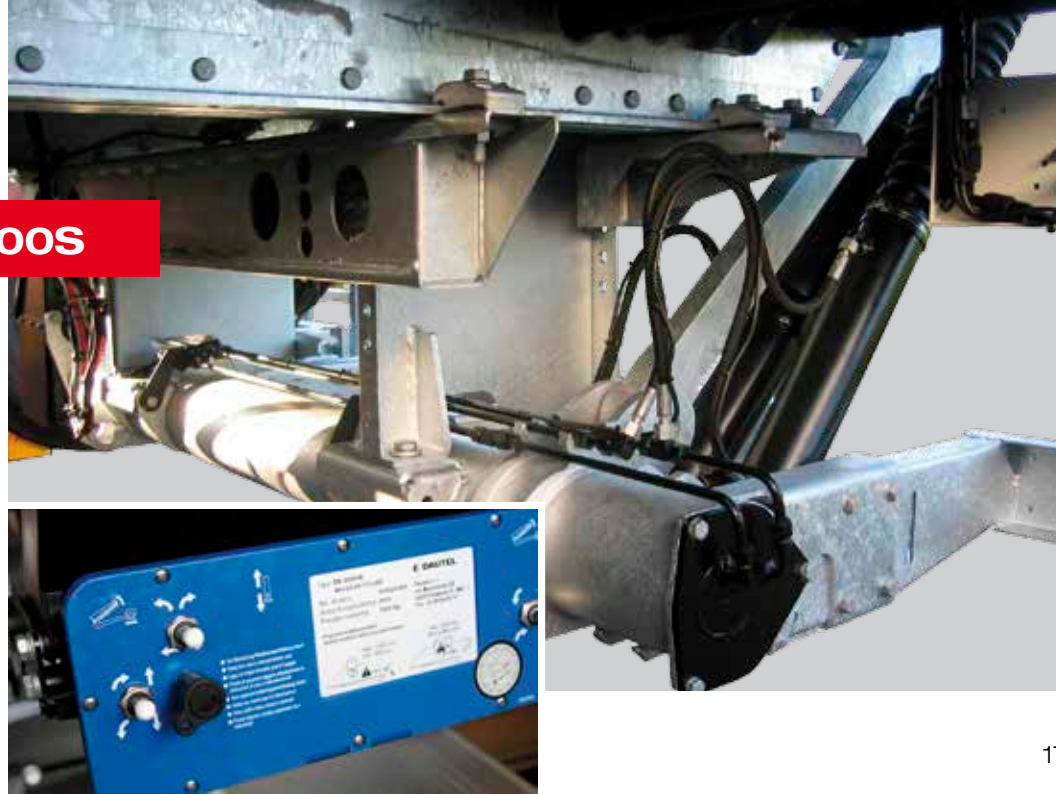


For trailers/semi-trailers

DAUTEL LIFTER DL 1500S – 2000S

No special trailer is necessary for steering axle trailers due to the hydraulic downtilt of the leading edge of the platform onto the ground. Only a very small clearance is needed. For external operation a coding switch is attached as an on/off switch. The control power cable with platform display for assembly in the cab is included in accordance with the EC directive. It is assembled by screwing onto the mounting structure that is mounted between the frames by the body manufacturer, or by screwing the support brackets onto the longitudinal bottom booms with a frame track of 980 mm or approx. 1,300 mm.

We recommend an additional battery system for reliable power supply to the **DAUTEL LIFTER**.



The second workplace of the user:

Classic I: Aluminium Platform Type N

Robust and economical

- Flat design with 40 mm profiles transverse to the driving direction connected in a cold jointing and 2 welded aluminium substructures that are torsion resistant and rollover resistant. KTL-painted steel connecting heads.
- Anti-slip surface, classification of the anti-slip property as per DIN 51130 R11 in downwardly inclined direction. New longitudinal and lateral optional „ANTI-SLIP“ surface, R13
- Optional Fixorand profile for mounting side bridging plates
- For DAUTEL LIFTER DL 1000 – 2500L with a load centre of 1000 mm
- Possible anti-roll protection type A1, A2, F1 and V1



The second workplace of the user:

Classic II: Aluminium Platform Type K

Ideal for advertising

- Robust design with 40 mm lateral welded profiles installed in travel direction, KTL-painted steel connecting heads
- Anti-slip surface, classification of the anti-slip property as per DIN 51130 R11 in downwardly inclined direction. New longitudinal and lateral optional R13 "ANTI-SLIP" or "QUALI-GRIP" surface.
- Optional Fixorand profile
- For **DAUTEL LIFTER** DL 1000 – 2000S
- Possible anti-roll protection type A1, D1, F1 and V1
- Optionally anodised in silver



For tough operation:

Aluminium-Platform Type P

- Flat design with 40-mm profiles transverse to the driving direction, welded on both sides and 2 welded aluminium substructures. The narrow chamber distances and the particularly strong top-flange profile with the DL 2500L/S and 3000S deliver unparalleled torsion and rollover resistance.
- Side profiles made from aluminium with low-wear V2A leading edge
- Optional Fixorand profile for the mounting of side bridging plates
- Classification of the anti-slip property according to DIN 51130, R10, with R11 noise-damping coating in downtilt direction
- For **DAUTEL LIFTER** from DL 1500S
- Possible anti-roll protection type A1, F1 and V1
- Optionally anodised in silver



For extreme operation:

Hot-Dip Galvanised Steel Platform

The steel platform is hot-dip galvanised inside and out and therefore offers the highest corrosion protection

Available for the **DAUTEL LIFTER** from DL 1500S, platform heights 1,800 mm, 2,100 mm, 2,200 mm, 2,300 and 2,400 mm. Optionally with anti-roll protection type F1, 1000 mm width for 2 rolling containers with max. 120 mm, length approx. 470 mm from the tip, optionally available with Fixo-rand. Classification of the anti-slip characteristic according to DIN 51130, R11 in downtilt direction.

Basic steel platform: primed on the outside with substructures and lateral profiles. Optional with casing panel between the substructures or also on the right and left of the substructures.



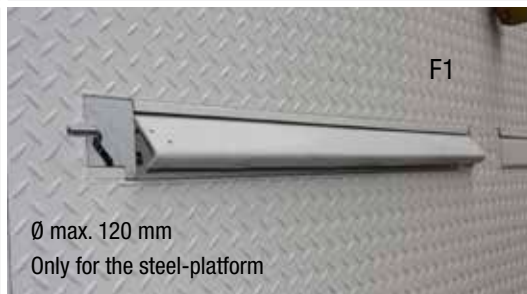
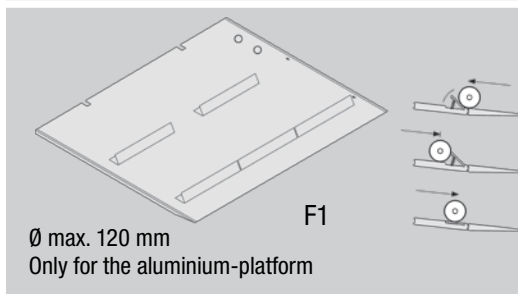
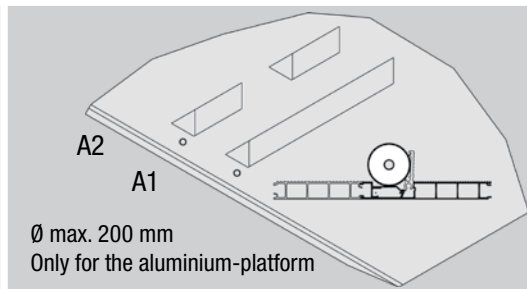
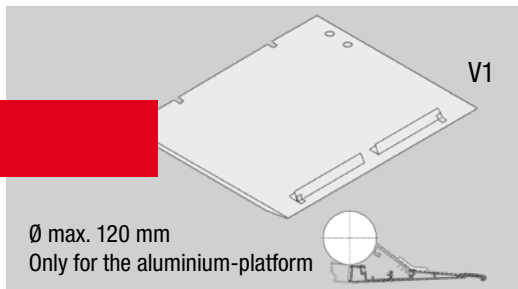
Aluminium-Platform

More Secure Support

for your rolling container

The fail-safe anti-roll protection is a crucial quality feature in your logistics chain.

DAUTEL offers you anti-roll protections for rolling containers with max. wheel diameters of 120 mm or 200 mm. Operation with the foot control is carried out individually or up to three anti-roll protections are opened simultaneously, individually locked and the function can be overridden from the leading edge of the platform.



Robust indicators

Modern LED Technology

The indicators on the platform use modern LED technology. They are extremely durable and robust.

- Rollover-resistant housing in cage construction made from die-cast zinc
- External chamfered edges with repellent effect on rear
- Increased safety through LEDs on the sides
- Plug-in cable connections
- Waterproof LED technology according to IP69
- Optional protection angle piece for indicator lights available



Securing the Load

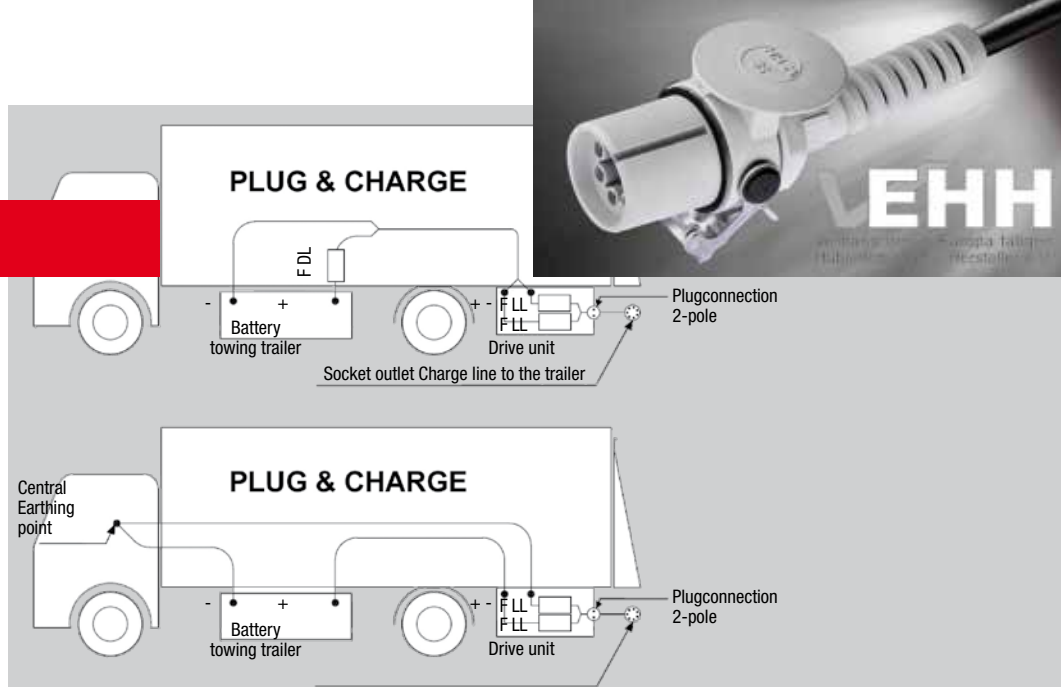
DAUTEL RAIN lock: DEKRA certifies a payload of up to 18 tonnes according to DIN-EN 12642, DIN-EN 12195 and VDI 2700. The self-closing system achieves platform locking with the reinforced rain-stop of the structure. With the optional automatic sequencing control, the platform dips in and out of the RAIN lock closure during the closing process. **DAUTEL LIFT lock:** DEKRA certifies a payload of up to 27 t. The double bolt locking mechanism is integrated in the platform, controlled by motion sequence as a form-fitting, self-closing, platform closure with the structure portal. **DAUTEL LIFTER** DL 1000 – 3000S achieve up to 2,400 mm platform height without additional fasteners, the build stability in accordance with DIN EN 12642 Code XL Annex A up to a payload of 20.1 t depending on installation situation.



Electronic charging line with charge current monitoring

SmartCharge SC

- Same technology as ABS plug connection
- Standardised PIN assignment of the HGV manufacturer – tail lift manufacturer
- Malfunction is indicated by a flashing signal in the cab/electronics control module
- Well-charged batteries increase reliability
- Less wear on the drive motor
- Simple, quick assembly
- Parts kits for HGVs, trailers and semi-trailers
- PLUG&CHARGE, connection to the drive unit **DAUTEL LIFTER** – it couldn't be easier!



Delivery Program

Standard	Load capacity	LC*
DAUTEL FLEETLIFTER DFL 1000	1,000 kg	600 mm
DAUTEL LIFTER DL 750A/B/K	750 kg	600 mm
DAUTEL LIFTER DL 950A/B	1,000 kg	500 mm
DAUTEL LIFTER DL 1000	1,000 kg	700 mm
DAUTEL LIFTER DL 1500L	1,500 kg	600 mm
DAUTEL LIFTER DL 1500S	1,500 kg	1,000 mm
DAUTEL LIFTER DL 2000L	2,000 kg	750 mm
DAUTEL LIFTER DL 2000S	2,000 kg	1,000 mm
DAUTEL LIFTER DL 2500L	2,500 kg	1,000 mm
DAUTEL LIFTER DL 2500S	2,500 kg	1,200 mm
DAUTEL LIFTER DL 3000S	3,000 kg	1,000 mm

Standard for low coupling	Load capacity	LC*
DAUTEL LIFTER DL 2000T	2,000 kg	1,000 mm
DAUTEL LIFTER DL 2500T	2,500 kg	800 mm
Folding	Load capacity	LC*
DAUTEL FOLDER DF 1000	1,000 kg	700 mm
DAUTEL FOLDER DF 1500L	1,500 kg	600 mm
Forklift accessible, 2-part platform	Load capacity	LC*
DAUTEL SLIDER DS 750VE	750 kg	600 mm
DAUTEL SLIDER DS 950VE	1,000 kg	500 mm
DAUTEL SLIDER DS 1500VAL	1,500 kg	600 mm
DAUTEL SLIDER DS 2000VAL	2,000 kg	750 mm
DAUTEL SLIDER DS 1500VA	1,500 kg	1,000 mm
DAUTEL SLIDER DS 2000VA	2,000 kg	1,000 mm

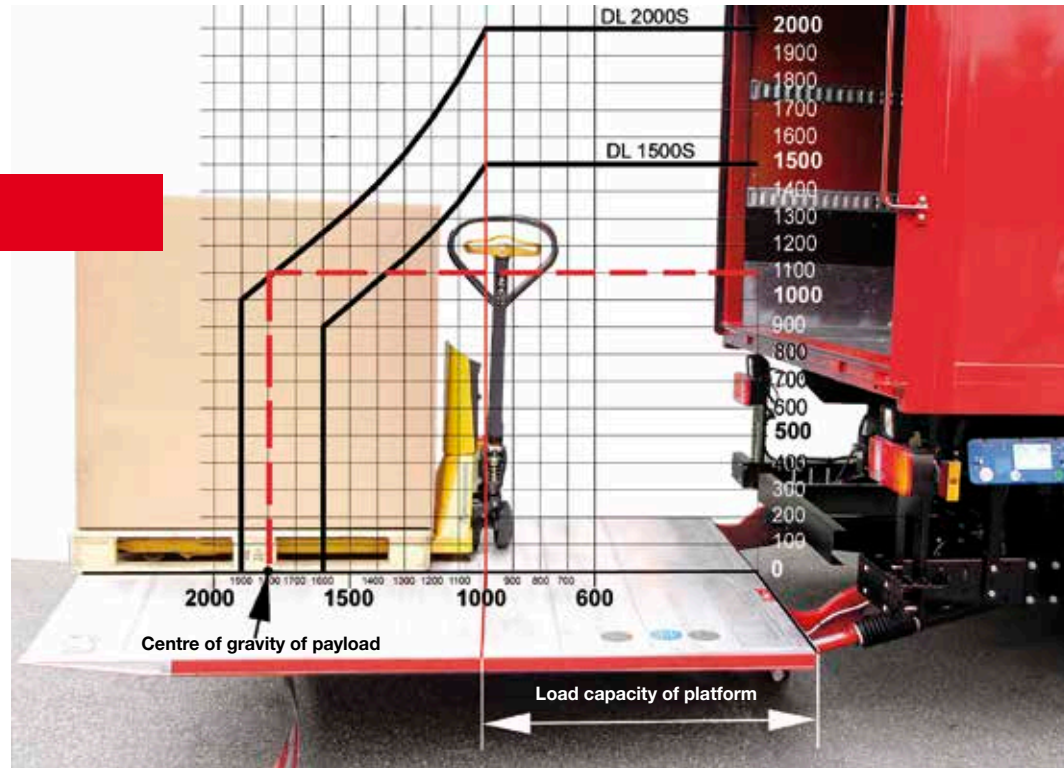
Forklift accessible, 1-part platform	Load capacity	LC*
DAUTEL SLIDER DS 750VE	750 kg	600 mm
DAUTEL SLIDER DS 950VE	1,000 kg	500 mm
DAUTEL SLIDER DS 1500VAL	1,500 kg	600 mm
DAUTEL SLIDER DS 2000VAL	2,000 kg	750 mm
DAUTEL SLIDER DS 1500VA	1,500 kg	1,000 mm
DAUTEL SLIDER DS 2000VA	2,000 kg	1,000 mm
DAUTEL SLIDER DS 2500VA	2,500 kg	960 mm
DAUTEL SLIDER DS 3000VA	3,000 kg	800 mm
DAUTEL SLIDER DS 1500VT	1,500 kg	800 mm
DAUTEL SLIDER DS 2000VT	2,000 kg	600 mm
DAUTEL SLIDER DS 1500VT XXL	1,500 kg	800 mm
DAUTEL SLIDER DS 2000VT XXL	2,000 kg	600 mm
Forklift accessible, 1-part platform Semi-trailer/Central axle trailer	Load capacity	LC*
DAUTEL SLIDER DS 1500VBL	1,500 kg	600 mm
DAUTEL SLIDER DS 2000VBL	2,000 kg	750 mm
DAUTEL SLIDER DS 2000VB	2,000 kg	1,000 mm
DAUTEL SLIDER DS 3000VB	3,000 kg	800 mm

How to determine the correct

Load Capacity + Load Centre

When purchasing a tailgate lift, the objective application conditions are frequently overlooked. The required rated load is determined according to customer specifications or the payload of the HGV, for example. The load capacity of a tail lift refers to the load centre at the beginning and in the middle of the platform.

The further the load is moved towards the leading edge of the platform, the greater the leverage effect and the lower the rated load.



DAUTEL *LIFTER* DL 500K

With the **DAUTEL** *LIFTER* DL 500K on your vehicle, you can load and unload rolling containers, pallets or heavy goods up to a net weight of 500/750 kg on the large platform, depending on the type of vehicle. Additional advantages include the low net weight of approx. 185 kg, simple operation using remote control with safety point, the hot-dip galvanised 4-cylinder lifting unit and good ground clearance. The simple and quick assembly is carried out by means of vehicle specific mounting brackets.



Load diagram

LC*	Load capacity
600 mm	500 kg
700 mm	430 kg
800 mm	375 kg

Technical data

Load capacity: 500/750 kg · **Net weight:** From approx. 185 kg

The Ideal Logistics Solution

LC* in longitudinal direction: 600 mm

LC* in transverse direction: Centred, 50 % of the nominal load on one side

Construction: 4-cylinder lifting unit, double-acting tilting cylinder, platform is opened hydraulically

Platform: Aluminium Type C, height 1,450/1,600 mm

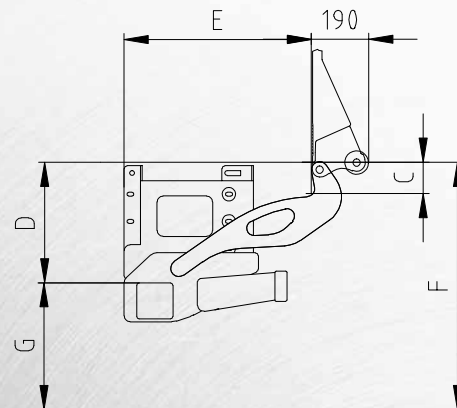
Tilt angle of the platform: + 90 ° to - 10 °

For vans: FORD Transit with rear-wheel drive, Iveco Daily, Mercedes-Benz Sprinter/Volkswagen Crafter 3.51 wheelbase 3,625 and 4,325 mm, 5 t wheelbase 4,325 mm, Mercedes-Benz Vario

Optional: With towing bracket and removable ballhitch

Arm length (in mm)	570	670
F Max. loading height	1,016	1,161
D Max. support tube mounting to OK loading platform	567	653
D Min. support tube mounting to OK loading platform	358	408
G Max. support tube mounting to road	449	508
E Max. clearance	654	741
E Min. clearance	446	496
C Min. end height	80	85
C Max. end height	138	138

*Load centre



DAUTEL *LIFTER* DL 500/750/950A

The **DAUTEL *LIFTER*** DL 500/750/950A offer the same constructional features as the large **DAUTEL *LIFTER***. Reliable, fail-safe, durable and easy to service, built for continuous professional use. The lifting unit is designed for the attachment conditions of transporter chassis and offers a large slope angle and high ground clearance.



Load diagram DL 500

LC*	Load capacity
600 mm	500 kg
700 mm	430 kg
800 mm	375 kg

Load diagram DL 750

LC*	Load capacity
600 mm	750 kg
700 mm	640 kg
800 mm	560 kg

Load diagram DL 950

LC*	Load capacity
500 mm	1,000 kg
600 mm	830 kg
700 mm	710 kg

High power

Load capacity: 500/750/1,000 kg · **Net weight:** From approx. 225 kg

4-Cylinder Lightweight

Variant A: Narrow, hot-dip galvanised lifting unit for max. platform width of 2,200 mm, for assembly between the chassis frames, generous space for backlights

LC* in longitudinal direction: 600 mm, 500 mm with 1,000 kg load capacity

LC* in transverse direction: Centred, 50 % of the nominal load on one side

Construction: 4-cylinder lifting unit, platform is opened hydraulically

Lifting arm length: 570 mm, 670 mm

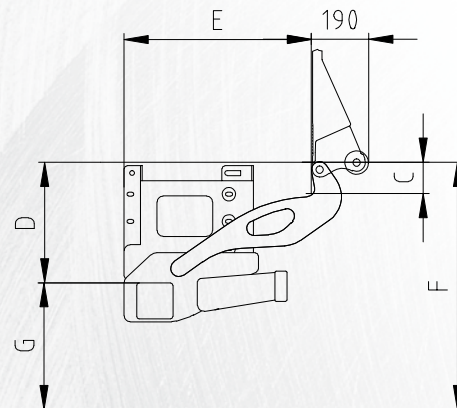
Platform: Aluminium, flat design, lateral fluting, height 1,605 mm

For transporter chassis: Up to 5 tonnes, primarily for Iveco Daily, Mercedes-Benz Sprinter, Volkswagen Crafter

	DL 500/750A		DL 950A	
Arm length (in mm)	570	670	570	670
F Max. loading height	1,016	1,161	925	1,055
D Max. support tube OK loading platform	567	653	476	547
D Min. support tube OK loading platform	358	408	358	408
G Max. support tube to road	449	508	449	508
E Max. clearance	654	741	654	741
E Min. clearance	446	496	564	634
C Min. end height	80	85	80	85
C Max. end height	138	138	120	120

Platform height minus 48 mm = top edge of loading area to the platform tip

*Load centre



DAUTEL LIFTER DL 500/750/950B

The **DAUTEL LIFTER** DL 500/750/950B offer the same constructional design features as the large **DAUTEL LIFTER**. Reliable, fail-safe, durable and easy to service, built for continuous professional use. The wide torsion-resistant lifting unit is designed for the attachment conditions of transporter chassis and offers a large slope angle and high clearance. **DAUTEL** offers tail lifts for installation on the left or right rear of the HGV.



Load diagram DL 500

LC*	Load capacity
600 mm	500 kg
700 mm	430 kg
800 mm	375 kg

Load diagram DL 750

LC*	Load capacity
600 mm	750 kg
700 mm	640 kg
800 mm	560 kg

Load diagram DL 950

LC*	Load capacity
500 mm	1,000 kg
600 mm	830 kg
700 mm	710 kg

High power

Load capacity: 500/750/1,000 kg · **Net weight:** From approx. 240 kg

4-Cylinder Lightweight

Variant B: Wide, torsion-resistant lifting unit for max. platform width of 2,520 mm, for assembly on the outside of the chassis frames

LC* in longitudinal direction: 600, 500 mm with 1,000 kg load capacity

LC* in transverse direction: Centred, 50 % of the nominal load on one side

Construction: 2 lifting and 2 tilting cylinders, platform is opened hydraulically

Lifting arm length: 570 mm, 670 mm

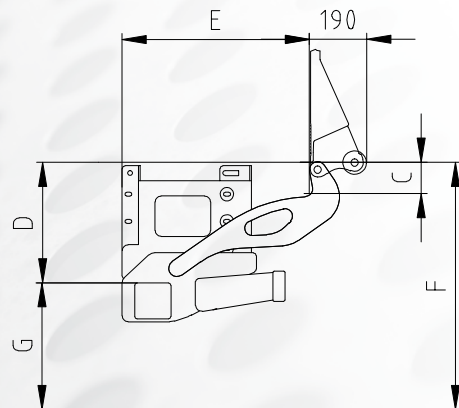
Platform: Aluminium, flat design, lateral fluting, height 1,605 mm, 1,805 mm with 500/750 kg rated load

For transporter chassis: Primarily for Iveco Daily up to 6.5 t, Mercedes-Benz Sprinter, Volkswagen Crafter up to 5 t and trailers up to 3.5 t

	DL 500/750B		DL 950B	
Arm length (in mm)	570	670	570	670
F Max. loading height	1,016	1,161	925	1,055
D Max. support tube OK loading platform	567	653	476	547
D Min. support tube OK loading platform	358	408	358	408
G Max. support tube to road	449	508	449	508
E Max. clearance	654	741	654	741
E Min. clearance	446	496	564	634
C Min. end height	80	85	80	85
C Max. end height	138	138	120	120

Platform height minus 48 mm = top edge of loading area to the platform tip

*Load centre



DAUTEL FLEETLIFTER DFL 1000

The **DAUTEL FLEETLIFTER** DFL 1000 is designed for universal application in distribution traffic in all sectors, with light loads of up to 1,000 kg, with a load center 600 mm from the beginning/middle of the platform. The robust 4-cylinder design – with 2 fastening plates, without continuous support pipe and with single-piece under-run guard that swivels downwards – offers the user the maximum payload of the truck, as it only has a net weight of just approx. 255 kg. The platform is hydraulically opened. As a result of the system design and in order to reduce its incorrect use, the platform height is 1,800 mm, assembly on an HGV can take place with a permissible total weight of 7.49 t, with an HGV frame width of 848 – 864 mm.



Load diagram DFL 1000

LC*	Load capacity
600 mm	1,000 kg
800 mm	750 kg
1,000 mm	600 kg

DAUTEL FLEETLIFTER

Load capacity: 1,000 kg

For light distribution traffic

Net weight: approx. 255 kg

Load torque: 6 kNm

Load centre (LM) in longitudinal direction: 600 mm

Load centre (LM) in lateral direction: Central, 50 % of the nominal load on one side

Lifting arm length: 770 mm

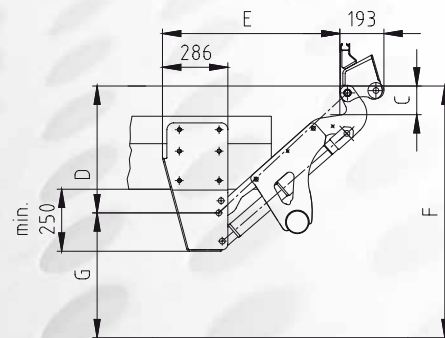
Platform: aluminium, flat design, height 1,805 mm, width 2,520 mm, with 2 V1 wheel chocks for wheels with -Ø max. 120 mm

Attachment: For HGVs with frame widths of 848-864 mm, max. perm. total weight 7.49 t

Optional: Towing bracket for ball coupling available.

Arm length (in mm)	770
F Max. loading height	1,128
D max.	555
D min.	494
G max	573
E Max. clearance	828
E Min. clearance	776
C Min. end height	122
C Max. end height	129
Platform height minus 57 mm = top edge of loading area to the platform tip	

*Load centre



DAUTEL *LIFTER* DL 1000

The **DAUTEL** *LIFTER* DL 1000 is designed for universal use in distribution transport on 7.49-tonne HGVs for light loads of less than 1,000 kg for all industries. Due to the low net weight, the robust, torsion-resistant and durable 4-cylinder construction offers the user the max. useful payload from his HGV. The platform height is limited to 2,100 mm due to system requirements and in order to reduce improper use. **DAUTEL** offers tail lifts for installation on the left or right rear or sides of the HGV.



The best-selling **DAUTEL LIFTER**

Load capacity: 1,000 kg

For Distribution Transport

Net weight e.g.: Aluminium platform Type N, 1,800 mm height, from 350 kg

Load torque: 7 kNm

LC* in longitudinal direction: 700 mm

LC* in transverse direction: Centred, 50 % of the nominal load on one side

Construction: 2 lifting and 2 tilting cylinders, platform is opened hydraulically

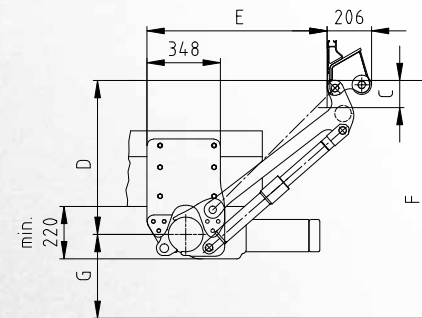
Lifting arm length: 800 mm, 900 mm

Platform: Aluminium type K and N, height 1,600/1,800 mm, Typ N 2,100 mm

Attachment: For HGVs with frame widths of 750 – 800 and 848 – 864 mm and max. 15 t total weight

Arm length (in mm)	800	900
F Max. loading height	1,240	1,434
D Max. support tube mounting to OK loading platform	715	820
D Min. support tube mounting to OK loading platform	540	623
G Max. support tube mounting to road	526	614
E Max. clearance	980	1,100
E Min. clearance	845	949
C Min. end height	100	100
C Max. end height	135	135
Platform height minus 67 mm = top edge of loading area to the platform tip		

*Load centre



DAUTEL *LIFTER* DL 1500L

The **DAUTEL** *LIFTER* DL 1500L is designed for use in distribution-transport on 7.49 – 15 t HGVs for loads up to 1,500 kg in compliance with the load diagram. Due to the low net weight, the robust, torsion-resistant and durable 4-cylinder construction offers the user the max. useful payload from his HGV. The platform height is limited to 2,100 mm due to system requirements and in order to reduce improper use.



Strong performance – Light weight

Load capacity: 1,500 kg

For Distribution Transport

Net weight e.g.: Aluminium platform Type N, 1,800 mm height, from 370 kg

Load torque: 9 kNm

LC* in longitudinal direction: 600 mm

LC* in transverse direction: Centred, 50 % of the nominal load on one side

Construction: 2 lifting and 2 tilting cylinders, platform is opened hydraulically

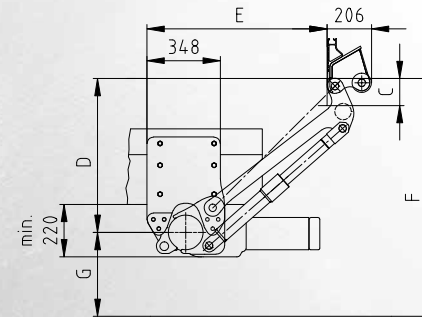
Lifting arm length: 800 mm, 950 mm

Platform: Aluminium type K and N, height 1,600/1,800/2,100 mm

Attachment: For HGVs with frame widths 848 – 864 mm and max. 15 t total weight

Arm length (in mm)	800	950
F Max. loading height	1,240	1,434
D Max. support tube mounting to OK loading platform	715	820
D Min. support tube mounting to OK loading platform	540	623
G Max. support tube mounting to road	526	614
E Max. clearance	980	1,100
E Min. clearance	845	949
C Min. end height	100	100
C Max. end height	135	135
Platform height minus 67 mm = top edge of loading area to the platform tip		

*Load centre



DAUTEL *LIFTER* DL 1500S

The **DAUTEL** *LIFTER* DL 1500S is designed for use in the drinks trade, general cargo and distribution transport. With its load capacity of 1,500 kg, a load centre of 1,000 mm and associated large reserve, it is the first choice for the often unknown load weights of general cargo transport. The use of electric pallet trucks with a net weight of approx. 500 kg or more is possible at the corresponding load weight.



Load diagram DL 1500S	
LC*	Load capacity
1,000 mm	1,500 kg
1,200 mm	1,250 kg
1,500 mm	1,000 kg
1,600 mm	930 kg

Load capacity: 1,500 kg

Powerful 1,500 kg Design

Net weight e.g.: Aluminium platform Type N, 1,800 mm height, from approx. 455 kg

Load torque: 15 kNm

LC* in longitudinal direction: 1,000 mm

LC* in transverse direction: Centred, 50 % of the nominal load on one side

Construction: 2 lifting and 2 tilting cylinders, platform is opened hydraulically

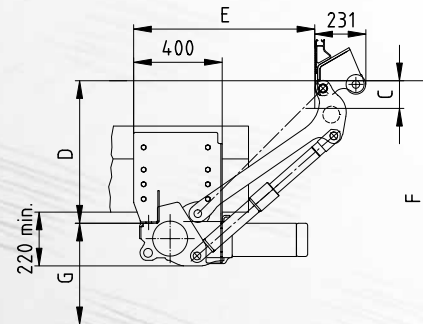
Lifting arm length: 800 mm, 950 mm

Platform: Aluminium type K, N, and P, height 1,800/2,000/2,100/2,200/2,300/2,400 mm. Steel platform primed on the outside or hot-dip galvanized.

Attachment: For HGVs, trailers and semi-trailers

Arm length (in mm)	800	950
F Max. loading height	1,354	1,565
D Max. support tube mounting to OK loading platform	733	856
D Min. support tube mounting to OK loading platform	479	553
G Max. support tube mounting to road	621	709
E Max. clearance	945	1,075
E Min. clearance	711	797
C Min. end height	100	100
C Max. end height	200	200
Platform height minus 67 mm = top edge of loading area to the platform tip		

*Load centre



DAUTEL *LIFTER* DL 2000L

The **DAUTEL** *LIFTER* DL 2000L is designed for use in general trade, distribution transport, the drinks industry and trade, and foodstuffs logistics. With its large reserve, it is the first choice for the often unknown load weights of general cargo transport. Up to 5 anti-roll protections can be integrated in the platform for use with rolling containers. The use of electric pallet trucks with a net weight of approx. 500 kg or more is possible at the corresponding load weight. The sensible solution when the **DAUTEL** *LIFTER* DL 2000S is too big and the DL 1500S is not big enough.



Load diagram DL 2000L

LC*	Load capacity
750 mm	2,000 kg
900 mm	1,660 kg
1,000 mm	1,500 kg
1,200 mm	1,250 kg

Load capacity: 2,000 kg

Powerful 2,000 kg, The Alternative

Net weight e.g.: Aluminium platform Type N, 1,800 mm height, from approx. 465 kg

Load torque: 15 kNm

LC* in longitudinal direction: 750 mm

LC* in transverse direction: Centred, 50 % of the nominal load on one side

Construction: 2 lifting and 2 tilting cylinders, platform is opened hydraulically

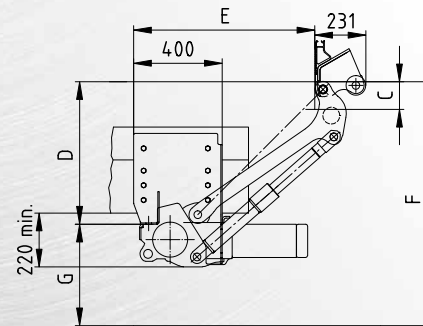
Lifting arm length: 800 mm, 950 mm

Platform: Aluminium type K, N, and P, height 1,800/2,000/2,100/2,200/2,300/2,400 mm. Steel platform primed on the outside or hot-dip galvanized.

Attachment: For HGVs, trailers and semi-trailers

Arm length (in mm)	800	950
F Max. loading height	1,354	1,565
D Max. support tube mounting to OK loading platform	733	856
D Min. support tube mounting to OK loading platform	479	553
G Max. support tube mounting to road	621	709
E Max. clearance	945	1,075
E Min. clearance	711	797
C Min. end height	100	100
C Max. end height	200	200
Platform height minus 67 mm = top edge of loading area to the platform tip		

*Load centre



DAUTEL LIFTER DL 2000S

The **DAUTEL LIFTER** DL 2000S is designed for tough and intensive use in the drinks industry and trade, and foodstuffs logistics. Its load capacity of 2,000 kg with a load centre of 1,000 mm and the associated large reserve makes it the first choice. Up to 5 anti-roll protections can be integrated in the platform for use with rolling containers. The right choice for use with electric pallet trucks.



Load capacity: 2,000 kg

For Professional Distribution of Goods

Net weight e.g.: Aluminium platform Type N, 1,800 mm height, from approx. 510 kg, 2,100 mm height, from approx. 520 kg

Load torque: 20 kNm

LC* in longitudinal direction: 1,000 mm

LC* in transverse direction: Centred, 50 % of the nominal load on one side

Construction: 2 lifting and 2 tilting cylinders, platform is opened hydraulically

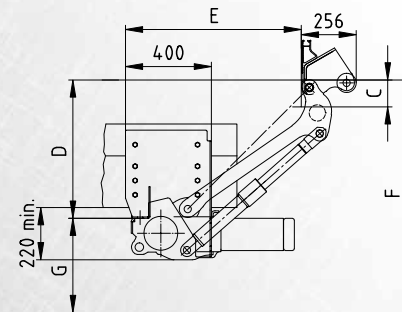
Lifting arm length: 800 mm, 950 mm

Platform: Aluminium type K, N, and P, height 1,800/2,000/2,100/2,200/2,300/2,400/2,505/2,605/2,705/2,805 mm. Steel platform primed on the outside or hot-dip galvanized.

Attachment: For HGVs, trailers and semi-trailers

Arm length (in mm)	800	950
F Max. loading height	1,379	1,590
D Max. support tube mounting to OK loading platform	733	856
D Min. support tube mounting to OK loading platform	479	553
G Max. support tube mounting to road	646	734
E Max. clearance	945	1,075
E Min. clearance	711	797
C Min. end height	100	100
C Max. end height	200	200
Platform height minus 67 mm = top edge of loading area to the platform tip		

*Load centre



DAUTEL *LIFTER* DL 2500L

The **DAUTEL** *LIFTER* DL 2500L is designed for tough and intensive use in the drinks industry and trade, and foodstuffs logistics. With its load capacity of 2,500 kg at a load centre of 800 mm, it offers high reserve capacity. Up to 5 anti-roll protections can be integrated in the platform for use with rolling containers. The right choice for use with electric pallet trucks. The sensible solution when the **DAUTEL** *LIFTER* DL 2500S/3000S are too big and the DL 2000S is not big enough.



Load diagram DL 2500L

LC*	Load capacity
1,000 mm	2,500 kg
1,200 mm	2,080 kg
1,500 mm	1,660 kg

Professional Distribution of Goods

Load capacity: 2,500 kg

For Special Uses

Net weight e.g.: Aluminium platform Type P, 2,105 mm height, from approx. 560 kg

Load torque: 25 kNm

LC* in longitudinal direction: 1000 mm

LC* in transverse direction: Centred, 50 % of the nominal load on one side

Construction: 2 lifting and 2 tilting cylinders, platform is opened hydraulically, powerful 3-kW motor

Lifting arm length: 800 mm, 950 mm

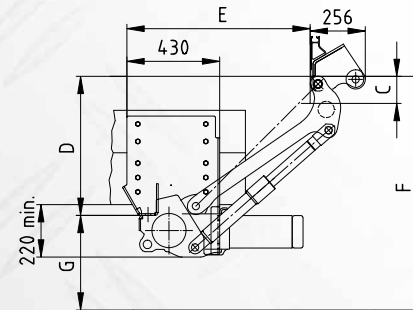
Platform: Aluminium Type P, heights 1,805/2,005/2,105/2,205/2,305/2,405 mm. Steel platform primed on the outside or hot-dip galvanized.

Attachment: For HGVs from 18 t, trailers and semi-trailers

Arm length (in mm)	800	950
F Max. loading height	1,337	1,540
D Max. support tube mounting to OK loading platform	691	806
D Min. support tube mounting to OK loading platform	479	553
G Max. support tube mounting to road	646	734
E Max. clearance	975	1,105
E Min. clearance	741	837
C Min. end height	100	100
C Max. end height	170	170

Platform height minus 67 mm = top edge of loading area to the platform tip

*Load centre



DAUTEL *LIFTER* DL 2500S/3000S

With a powerful load torque of 30 kNm, the **DAUTEL** *LIFTER* DL 2500S/3000S is made for the transport of large and heavy loads. Two heavy pallets can be loaded simultaneously with the help of an electric pallet truck.



Load diagram DL 2500S

LC*	Load capacity
1,200 mm	2,500 kg
1,400 mm	2,140 kg
1,600 mm	1,870 kg
1,900 mm	1,570 kg

Load diagram DL 3000S

LC*	Load capacity
1,000 mm	3,000 kg
1,400 mm	2,140 kg
1,600 mm	1,870 kg
1,900 mm	1,570 kg

Load capacity: 2,500/3,000 kg

For Heavy-Duty Use

Net weight e.g.: Aluminium platform Type P, 2,105 mm height, from approx. 625 kg

Load torque: 30 kNm

LC* in longitudinal direction: 1,200/1,000 mm

LC* in transverse direction: Centred, 50 % of the nominal load on one side

Construction: 2 lifting and 2 tilting cylinders, platform is opened hydraulically, powerful 3-kW motor

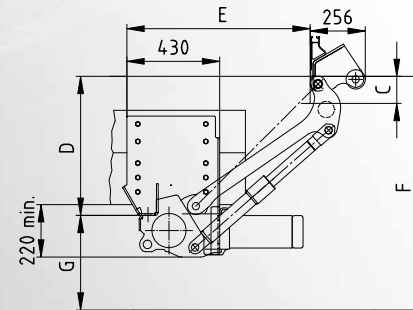
Lifting arm length: 800 mm, 950 mm

Platform: Aluminium Type P, heights 1,805/2,005/2,105/2,205/2,305/2,405/2,505/2,605/2,705/2,805 mm. Steel platform primed on the outside or hot-dip galvanized.

Attachment: For HGVs from 18 t, trailers and semi-trailers

Arm length (in mm)	800	950
F Max. loading height	1,337	1,540
D Max. support tube mounting to OK loading platform	691	806
D Min. support tube mounting to OK loading platform	479	553
G Max. support tube mounting to road	646	734
E Max. clearance	975	1,105
E Min. clearance	741	837
C Min. end height	100	100
C Max. end height	170	170
Platform height minus 67 mm = top edge of loading area to the platform tip		

*Load centre



DAUTEL LIFTER DL 2000T/2500T

The **DAUTEL LIFTER** DL 2000T/2500T is designed for HGVs with normal and low coupling for tough and intensive use in the drinks industry and trade, and foodstuffs logistics.

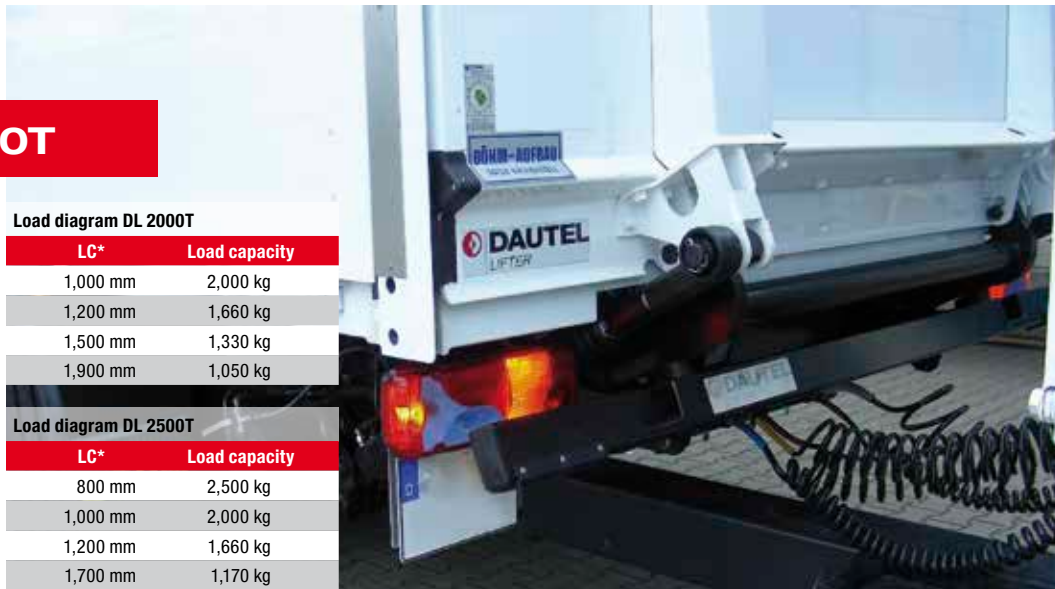
The underride protection can be folded hydraulically and is force operated via a safety circuit. Good freedom of movement for the tow bar is ensured by a height of only 120 mm from the lower edge of the HGV frame in conjunction with bolt-on mounting plates. The drive-under protection can be folded hydraulically and is controlled using the outside controller, for solo truck use (folded up), or with a trailer (folded away). In solo truck use, the hydraulically foldable drive-under protection is moved out of the way when the platform is lowered using a float setting fitted to the top. With a build height of just 120 mm

Load diagram DL 2000T

LC*	Load capacity
1,000 mm	2,000 kg
1,200 mm	1,660 kg
1,500 mm	1,330 kg
1,900 mm	1,050 kg

Load diagram DL 2500T

LC*	Load capacity
800 mm	2,500 kg
1,000 mm	2,000 kg
1,200 mm	1,660 kg
1,700 mm	1,170 kg



User-Friendly Operation

Load capacity: 2,000/2,500 kg

For HGVs with Normal and Low Coupling

Net weight e.g.: Aluminium platform Type P, 2,105 mm height, from approx. 620 kg

Load torque: 20 kNm

LC* in longitudinal direction: 1,000/800 mm

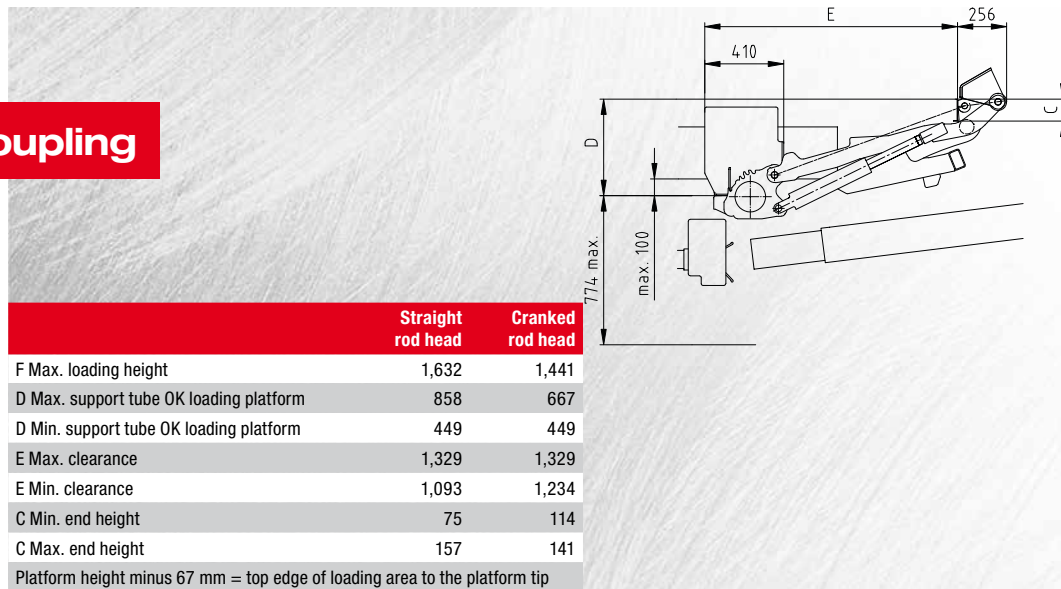
LC* in transverse direction: Centred, 50 % of the nominal load on one side

Construction: 2 lifting and 2 tilting cylinders, platform is opened hydraulically

Lifting arm length: 1,050 mm

Platform: **DL 2000T** Aluminium type K, N, and P, height 1,800/2,000/2,100/2,200/2,300/2,400/2,505/2,605/2,705/2,805 mm, **DL 2500T** Aluminium type P. Steel platform primed on the outside or hot-dip galvanized.

Attachment: For 3-axle HGVs



*Load centre

DAUTEL *FOLDER* DF 1000, DF 1500L

The **DAUTEL LIFTER** is comfortable to load because the platform tilt can be adjusted. If necessary, the platform pack can be set up hydraulically under the body, unfolded easily by hand because it is spring-loaded and the lightweight platform leading edge unfolded by hand. It is also suitable for refrigerated bodies since only a loading profile is required, and not a specific rear endprofile. In the driving position it is retracted under the body. Loading on ramps or ramp bridges is possible without the use of the **DAUTEL FOLDER**.



Load diagram DF 1000

LC*	Load capacity
700 mm	1,000 kg
800 mm	875 kg
900 mm	770 kg
1,000 mm	600 kg

Load diagram DF 1500L

LC*	Load capacity
600 mm	1,500 kg
800 mm	1,125 kg
900 mm	1,000 kg
1,200 mm	600 kg

Load capacity: 1,000/1,500 kg

Quickly Ready for Use when Necessary

Net weight: DF 1000 approx. 390 kg, DF 1500L approx. 395 kg

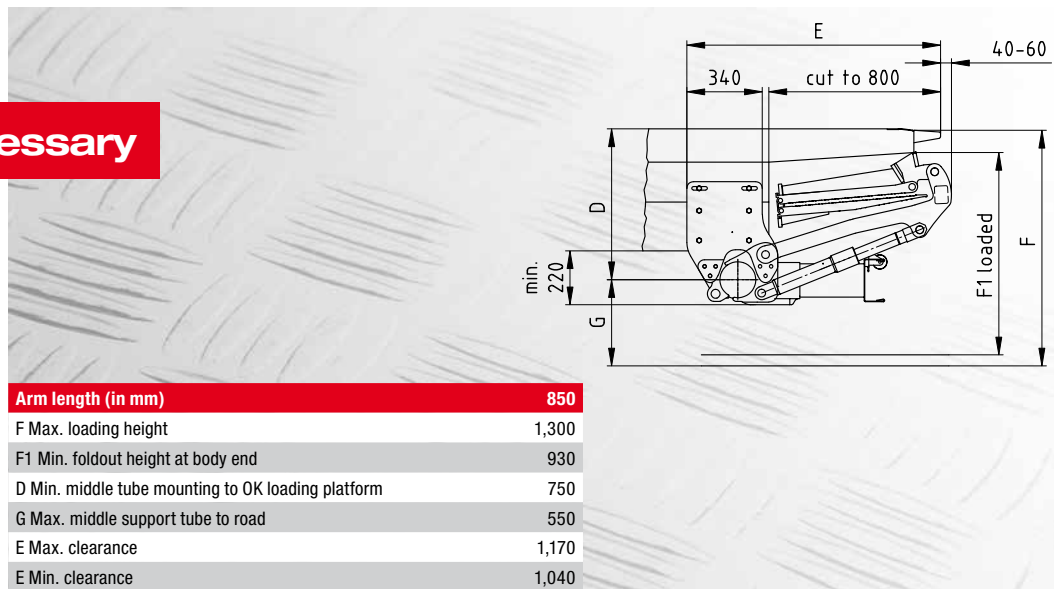
Load torque: 7 kNm

LC* in longitudinal direction: 700/600 mm

LC* in transverse direction: Centred, 50 % of the nominal load on one side

Construction: 2 lifting and 2 tilting cylinders,
platform size 1,330 x 2,200 mm (LxW)

Attachment: For HGVs with 7.49 to 15 t of total weight and a frame width of
848 – 864 mm



*Load centre

For 3.5 – 6 t transporter chassis

DAUTEL SLIDER DS 750/950VE

The **DAUTEL SLIDER** is a horizontally retractable tail-board lift with a single or double folding aluminium platform. The innovative combination of parts from the **DAUTEL LIFTER DL 750/950** and **DAUTEL SLIDER** means that you can use minimal installation space on the transporter chassis with a maximum permitted gross weight of 3.5 to 6 t. The platform packet or the platform tip is easily folded in and out by hand with the help of a torsion spring. The **DAUTEL SLIDER DS 750/950VE** is the ideal loading system for applications where loading assistance is only occasionally needed. Loading and unloading can also be done on ramps with a forklift truck or loading docks.



Load diagram DS 750VE

LC*	Load capacity
600 mm	750 kg
1,000 mm	450 kg

Load diagram DS 950VE

LC*	Load capacity
500 mm	1,000 kg
1,000 mm	500 kg

Rated load: 750 or 1,000 kg

For a variety of possible applications

Load torque: 4.5 kNm, 5 kNm for 1,000 kg

LT* in longitudinal direction: 600 mm, 500 mm for 1,000 kg

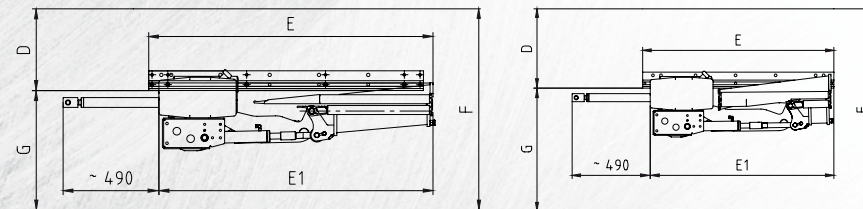
LT* in transverse direction: in middle, 50 % of the nominal load on one side

Construction: 2 lift cylinders and 2 tilt cylinders

Platform: Aluminium platform single-fold, length 1,610 mm, double-fold, length 1,555 mm. Width 2,100 mm

Positioning unit: double-action hydraulic cylinders, sturdy steel guide rails, low maintenance bearings

Applications: Transporter chassis with box body or platform body with sufficient superstructure overhang, preferably Iveco Daily 3.5 to 6 t, Mercedes-Benz Sprinter and VW Crafter 3.5 to 5 t.



	DS 750/950VE single fold	DS 750/950VE double fold
Arm length (in mm)	570	670
F Max. loading height	1,020	1,260
D Max. middle of supporting tube to OK loading platform	415	495
G Max. middle of supporting tube to roadway	605	765
E Min. installation space	1,440	1,200
E1 Min. mudguard installation space	1,390	1,490

*Load centre

DAUTEL DL LIFTERFLEX

DAUTEL DS 1500VA/2000VA SLIDERFLEX

DAUTEL LIFTERFLEX · SLIDERFLEX

With the *LIFTERFLEX*, **DAUTEL LIFTER** DL 1500S to 2000S can be mounted on HGVs with trailer coupling and with BDF interchangeable bodies of various lengths, e.g. C715 and C745. The **DAUTEL LIFTER** is not rigidly attached to the HGV frame, but is hydraulically adjustable and movable. The *SLIDERFLEX* combines the advantages of **DAUTEL SLIDER** and **DAUTEL LIFTER** accessible and standard design. Loading and unloading on ramps is possible. The foldable platform is made into a rigid ramp by means of a special locking mechanism, transit weight max. 1,000 kg, optionally 1,500 kg. The platform is mounted on HGVs with box bodies.



Load diagram DS 1500VA

LC*	Load capacity
1,000 mm	1,500 kg
1,500 mm	1,000 kg

Load diagram DS 2000VA

LC*	Load capacity
750 mm	2,000 kg
1,200 mm	600 kg

Accessible and Standard Tail Lift

Load capacity: 1,500/2,000 kg

2 in 1

Net weight: **DS 1500** approx. 620 kg, **DS 2000VA** approx. 640 kg

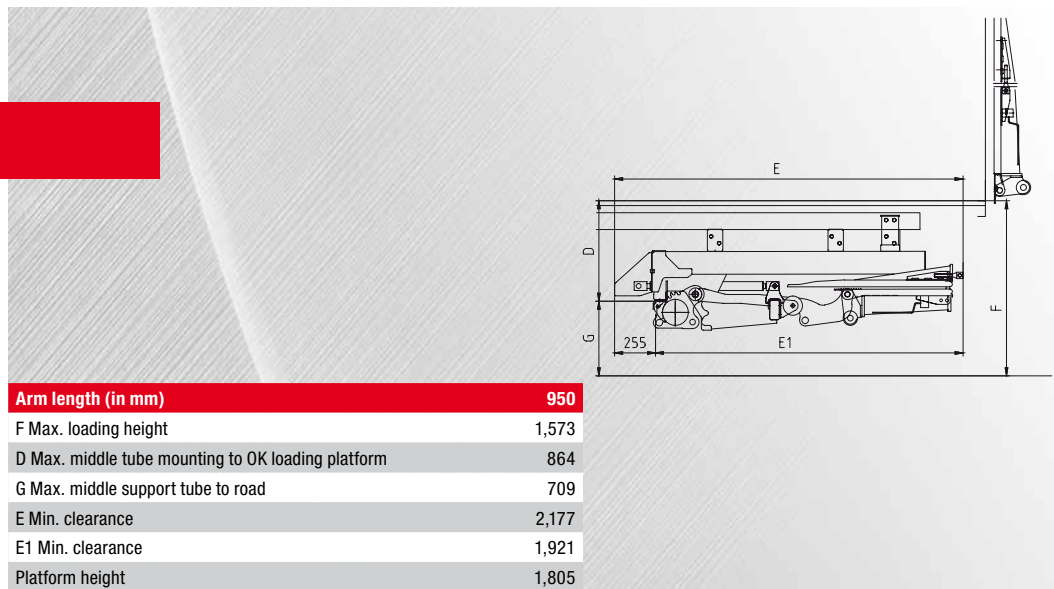
Load torque: 15/16 kNm

LC* in longitudinal direction: 1,000/800 mm

LC* in transverse direction: Centred, 50 % of the nominal load on one side

Construction: 2 lifting and 2 tilting cylinders, displacement cylinder,
2 underrideprotection positions

Platform: Folding aluminium platform 1,800 x 2,300 mm, (HxW), for 2-axle
HGVs up to 18 t permissible total weight

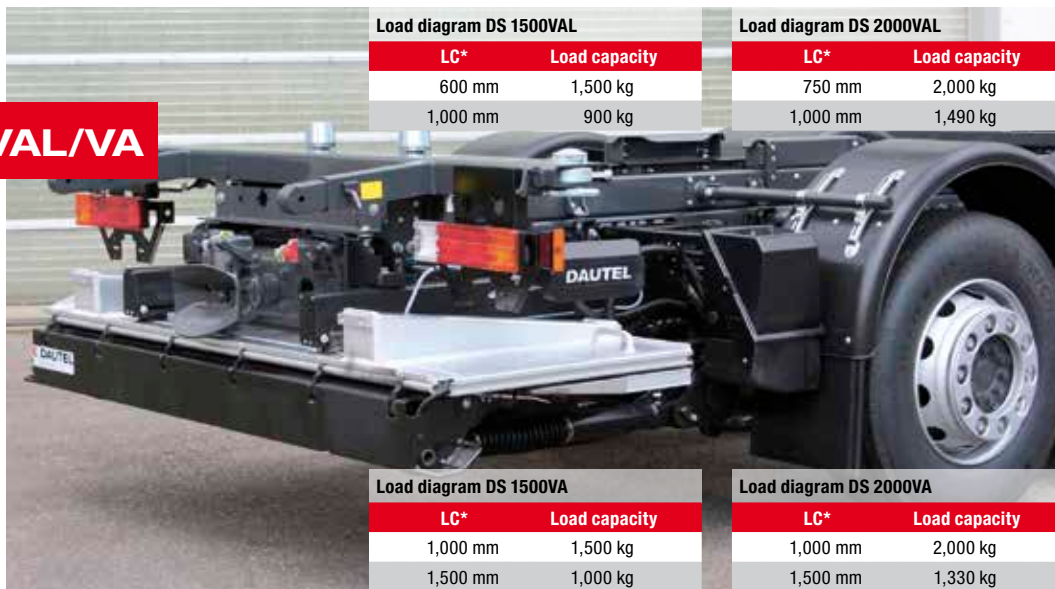


*Load centre

For HGVs with BDF changeable superstructures or short superstructure overhang

DAUTEL SLIDER DS 1500/2000VAL/VA

The **DAUTEL SLIDER** is a horizontally accessible tail lift with a double folded platform. Independent of local loading equipment, its large platform makes it the perfect loading system for freight forwarding agents, transport operations and distribution transport. BDF interchangeable bodies can be stopped directly on the ramp or loading bays, or loaded with fork lift/pallet trucks. The platform pack is extended optionally hydraulically unfolded (DS 1500/2000VA) and the light platform point folded out by hand. With the foldable bridging plate mounted to the platform with automatic return during the lowering process, you can bridge locking parts or rubber bumpers, (DS 1500/2000VA).



Load diagram DS 1500VAL

LC*	Load capacity
600 mm	1,500 kg
1,000 mm	900 kg

Load diagram DS 2000VAL

LC*	Load capacity
750 mm	2,000 kg
1,000 mm	1,490 kg

Load diagram DS 1500VA

LC*	Load capacity
1,000 mm	1,500 kg
1,500 mm	1,000 kg

Load diagram DS 2000VA

LC*	Load capacity
1,000 mm	2,000 kg
1,500 mm	1,330 kg

With approx. 25 % more load torque than is customary on the market

Load capacity: 1,500/2,000 kg · **Net weight:** From approx. 590 kg

Powerful Load Torque

Load torque: 15 kNm or 20 kNm

LC* in longitudinal direction: 1,000 mm

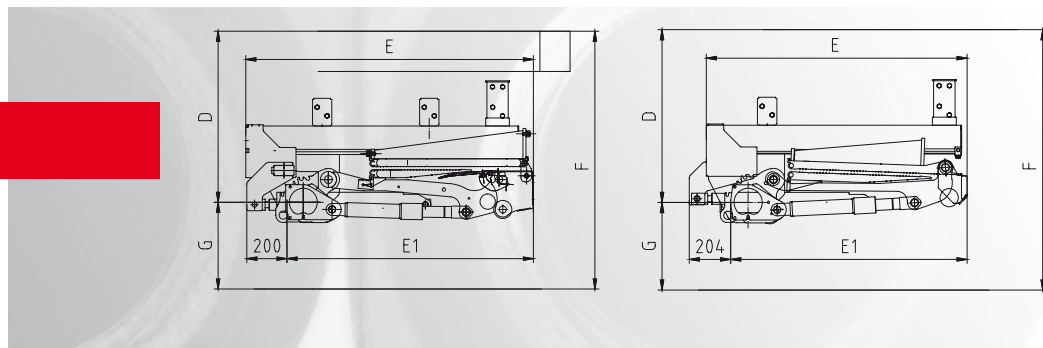
LC* in transverse direction: Centred, 50 % of the nominal load on one side

Construction: 2 lifting and 2 tilting cylinders

Platform: Folding steel/aluminium platform with 2 folding-parts, lengths 1,540, 1,740 and 1,950 mm, width 2,300 mm

Slider unit: Double-acting hydraulic cylinder, robust aluminium guide profiles and low-maintenance roller/slide guidance

Application: Rigid superstructures with short superstructure overhang, trucks with low and normal coupling, DS 1500-2000VA for trucks with BDF changeable superstructures.



	DAUTEL SLIDER DS-VA			DAUTEL SLIDER DS-VAL		
Arm length (in mm)	850	950	1,050	850	950	1,050
F Max. loading height	1,433	1,573	1,714	1,477	1,623	1,770
D Max. middle support tube to OK loading platform	852	934	1,016	817	895	973
platform length height max.	1,540	1,740	1,950	1,580	1,760	1,760
G Max. middle support tube to road	581	639	698	660	729	796
E Max. clearance	1,432	1,532	1,632	1,288	1,388	1,488
E1 Min. mudguard clearance	1,227	1,327	1,427	1,168	1,268	1,368

*Load centre

For HGVs with box/drop-side bodies

DAUTEL SLIDER DS 1500/2000VAL/VA

The **DAUTEL SLIDER** is a horizontally accessible tail lift with a foldable platform for HGVs with a large overhang. This makes the user independent of local loading units. With its large platform, **DAUTEL SLIDER** is the perfect loading system for forwarding agents, transport operations and distribution transport, box or drop-sided bodies can be loaded with a forklift truck. The platform package is hydraulically driven out under the superstructure, manually folded out with spring support optionally hydraulically (DL 1500/2000VA) and the light platform tip is unfolded by hand with the help of spring loading.



Load diagram DS 1500VAL

LC*	Load capacity
600 mm	1,500 kg
1,000 mm	900 kg

Load diagram DS 1500VA

LC*	Load capacity
1,000 mm	1,500 kg
1,200 mm	1,250 kg

Load diagram DS 2000VAL

LC*	Load capacity
750 mm	2,000 kg
1,000 mm	1,500 kg

Load diagram DS 2000VA

LC*	Load capacity
1,000 mm	2,000 kg
1,200 mm	1,660 kg

DS 1500VA/2000VA with approx. 25 % greater load torque than the market standard · Rated load: 1,500/2,000 kg · Net weight: from approx. 470 kg

Powerful Load Torque

Load torque: VAL 9 kNm or 15 kNm, VA 15 kNm or 20 kNm

LM* in longitudinal direction: VAL 600 or 750 mm, VA 1,000 mm

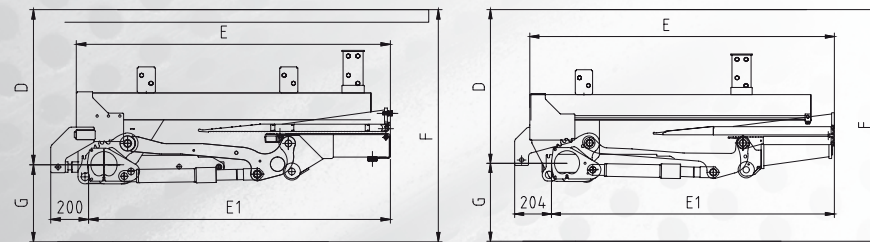
LM* in lateral direction: Central, 50 % of the nominal load on one side

Design: 2 lift and 2 tilt cylinders

Platform: Type VAL; aluminium platform 2x folded, length 1,580 and 1,760 mm including drive-over profile, 1,710 mm with drive-over plate, width 2,300 mm. Type VA; steel/aluminium platform 2x folded, length 1,540, 1,740 and 1,950 mm, width 2,300 mm

Slider unit: Double-acting hydraulic cylinder, robust aluminium guide profiles and low-maintenance roller/slide guidance

Application: HGV with rigid bodies with sufficient overhang, trailer coupling, semi-trailer



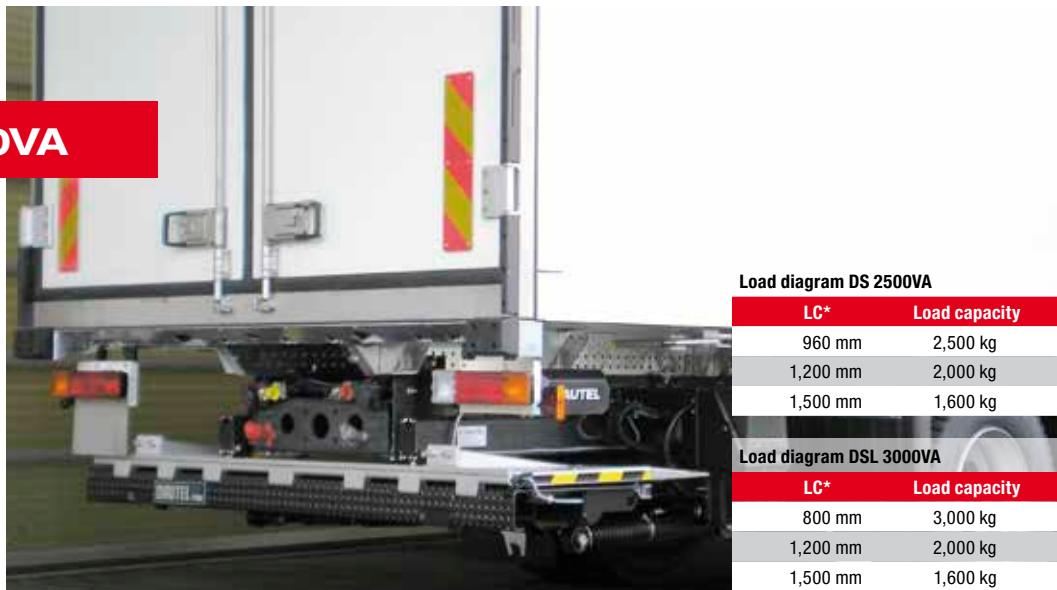
	DAUTEL SLIDER DS-VA			DAUTEL SLIDER DS-VAL	
Arm length (in mm)	850	950	1,050	850	950
F Max. loading height	1,433	1,573	1,714	1,477	1,623
D Max. middle support tube to OK loading platform	852	934	1,016	817	895
platform length max.	1,620	1,720	1,820	1,605	1,808
G Max. middle support tube to road	581	639	698	660	729
E Min. clearance PH 1,620	1,661	1,761	1,861	1,688	1,788
E Min. clearance PH 1,720/1,820	1,761	1,861	1,961	1,891	1,991
E1 Min. mudguard clearance PH1,620	1,596	1,696	1,796	1,568	1,668
E1 Min. mudguard clearance PH 1,720/1,820	1,696	1,796	1,896	1,770	1,870

*Load centre

For HGVs with box/drop-side bodies

DAUTEL SLIDER DS 2500/3000VA

The **DAUTEL SLIDER** is a horizontally accessible tail lift with a foldable platform for HGVs with a large overhang. This makes the user independent of local loading units. With a large platform of up to 2,020 mm and super loading capacity of 2,500/3,000 kg with a very large load centre of 960/800 mm, the **DAUTEL SLIDER** is the perfect loading system for heavy loads for forwarding agents, transport operations and distribution transport. Its handling is the same as the **DAUTEL SLIDER DS 1500/2000VA**.



DS 1500VA/2000VA with approx. 25 % greater load torque than the market standard · Load capacity: 2,500/3,000 kg · Rated load: 1,500/2,000 kg

Extremely Strong Performance

Net weight: from approx. 455 kg · **Design:** 2 lift and 2 tilt cylinders

Load torque: VAL 9 kNm or 15 kNm, VA 15 kNm or 20 kNm

LM* in longitudinal direction: VAL 600 or 750 mm, VA 1,000 mm

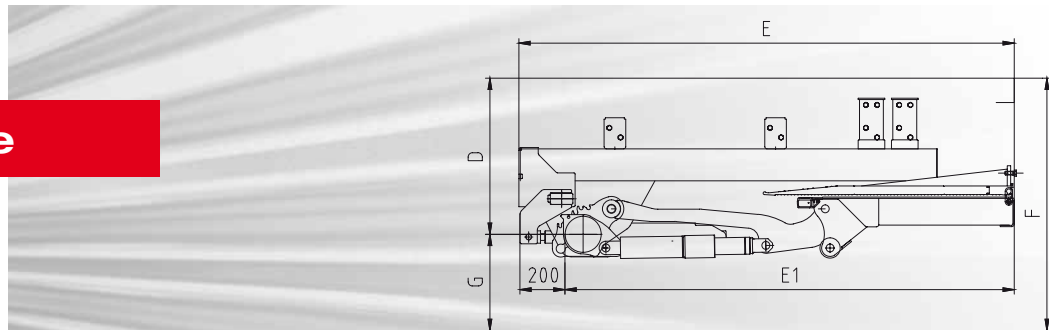
LM* in lateral direction: Central, 50 % of the nominal load on one side

Platform: Type VAL; aluminium platform 1x folded, length 1,605 and 1,808 mm including drive-over profile, width 2,400 mm

Type VA; steel/aluminium platform 1x folded, length 1,620, 1,720 and 1,820 mm + drive-over profile 70 mm, width 2,400 mm

Slider unit: Double-acting hydraulic cylinder, robust aluminium guide profiles and low-maintenance roller/slide guidance

Application: HGV with rigid bodies with sufficient overhang, trailer coupling, semi-trailer



Arm length (in mm)	950
F Max. loading height	1,555
D Max. middle support tube to OK loading platform	891
G Max. middle support tube to road	664
E Min. clearance	2,200
E1 Min. mudguard clearance	1,996
Platform height	1,820/2,020/2,220

*Load centre

For HGVs with low coupling for volume-optimised transport

DAUTEL SLIDER DS 1500/2000VT XXL

DAUTEL SLIDER DS 1500/2000VT for HGVs with a loading height/set down height of 1,020 – 1,320 mm, coupling return min. 1,400 max. 1,600 mm, with fixed and longhaul goods traffic exchangeable superstructure. The hoist gear in the low level version with offset support pipe enables optimum drawbar freedom. The HGV frame must be tapered depending on the mounting situation. With low load heights the tail lights and the number plate can be integrated into the platform. **DAUTEL SLIDER DS 1500/2000VT XXL** for HGVs with a drive height of 860 mm (OK-HGV-frame) for longhaul goods traffic exchangeable superstructure C745/C782 with a set down height of 970 mm. 3 components = 1 part, integral tail unit connects tail-gate lift, low coupling and rear attachment point for longhaul goods traffic exchangeable superstructure. The tail lights are integrated into the platform.



Extreme in Load Torque and Performance

Load capacity: 1,500/2,000 kg

Extremely Strong Performance

Net weight: Type VT from approx. 565 kg, type VT XXL from approx. 1,200 kg
incl. integral tail unit

Load torque: 12 kNm

LC* in longitudinal direction: 800/600 mm

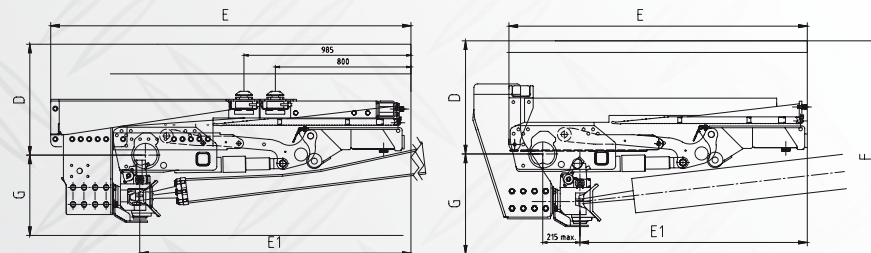
LC* in transverse direction: Centred, 50 % of the nominal load on one side

Construction: 2 lifting and 2 tilting cylinders

Platform: Foldable steel/aluminium platform with a single folding section,
length 1,720, width 2,400 mm, easy folding in and out of leading platform
edge by hand with spring loading

Slider unit: Double-acting hydraulic cylinder, steel guide profiles

Application: HGVs with frame widths of 752 – 770 mm, 18 to 26 t, with deep
coupling, BDF-changeable superstructures C745/782



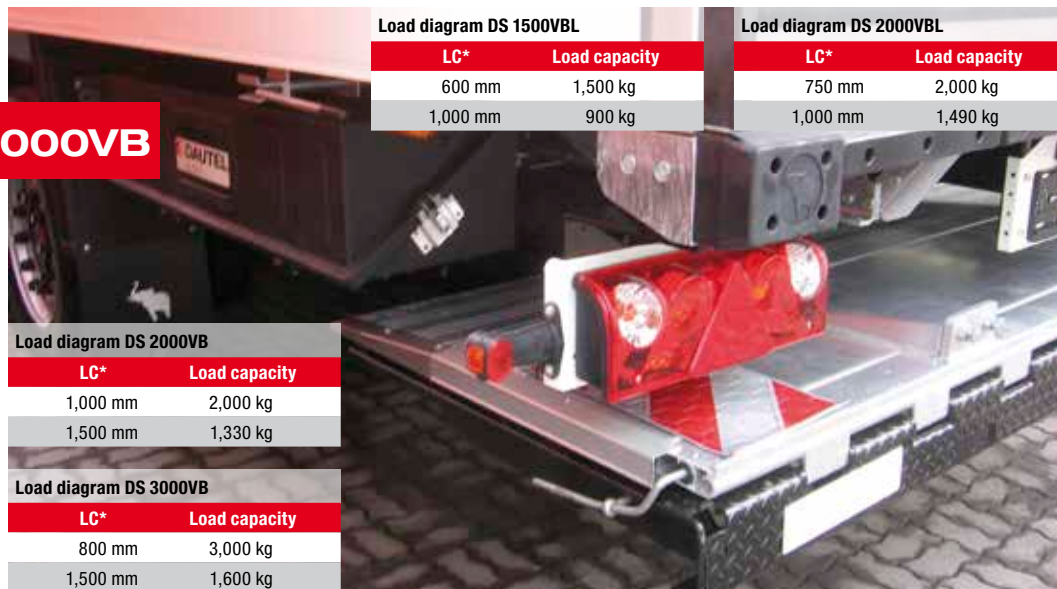
	DAUTEL SLIDER DS-VT XXL	DAUTEL SLIDER DS-VT	
Arm length (in mm)	850	850	950
F Max. loading height	1,474	1,474	1,619
D Max. middle support tube to OK loading platform	813	813	890
G Max. middle support tube to road	661	661	729
E Min. clearance	1,725	1,725	1,825
E1 Min. mudguard clearance	1,600	1,300	1,400
Platform height	1,720	1,720	1,720

*Load centre

For semi-trailers with frame track of 1,300 mm

DAUTEL SLIDER DS 1500VBL-3000VB

The **DAUTEL SLIDER** is a horizontally accessible tail lift with a single folded platform. Regardless of local loading equipment, its large platform makes it the perfect loading system for forwarding agents, transport operations and distribution transport. Loading and unloading are also possible by forklift or on ramps. The platform pack is hydraulically extended under the body and the leading edge of the platform is easily unfolded by hand with the help of spring loading. The platform is mounted with the **DAUTEL CLAMP-ON** assembly technology which is bolted onto the longitudinal beam chords of the semi-trailer.



Load diagram DS 1500VBL

LC*	Load capacity
600 mm	1,500 kg
1,000 mm	900 kg

Load diagram DS 2000VBL

LC*	Load capacity
750 mm	2,000 kg
1,000 mm	1,490 kg

Load diagram DS 2000VB

LC*	Load capacity
1,000 mm	2,000 kg
1,500 mm	1,330 kg

Load diagram DS 3000VB

LC*	Load capacity
800 mm	3,000 kg
1,500 mm	1,600 kg

DS 2000VB with approx. 25 – 33 % greater load torque than the market standard

With Powerful Load Torque

Rated load: 1,500 – 3,000 kg net weight from approx. 480 kg without battery box

Load torque: 9/15/20/24 kNm

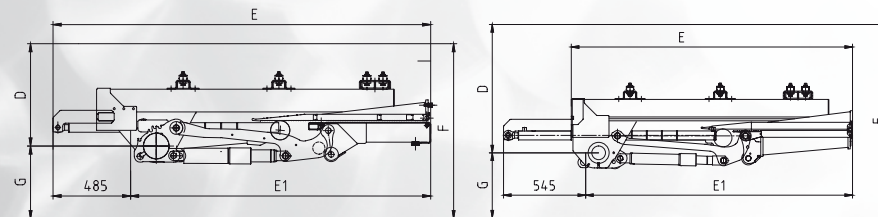
LM* in longitudinal direction: 600/750/1,000/800 mm

LC* in transverse direction: Centred, 50 % of the nominal load on one side

Platform: Type VBL aluminium platform 1x folded, 1,808 mm incl. drive-over profile, type VB steel platform with aluminium tip 1x folded, 1,820,2,020 & 2,220 mm + drive-over profile 70 mm, width 2,400 mm

Slider unit: Double-acting hydraulic cylinder, robust aluminium guide profiles and low-maintenance roller/ slide guidance

Application: Semi-trailer and central axle trailer with a frame width approx. 1300 mm



	DAUTEL SLIDER DS-VB		DAUTEL SLIDER DS-VBL	
Arm length (in mm)	950	850	950	
F Max. loading height	1,555	1,477	1,623	
D Max. middle support tube to OK loading platform	891	817	895	
G Max. middle support tube to road	664	660	729	
E Min. clearance PH 1,820	2,360	PH 1,808	1,866	1,966
E1 Min. mudguard clearance PH 1,820	1,875	PH 1,808	1,770	1,870
E Min. clearance PH 2,020/2,220	2,560			
E1 Min. mudguard clearance PH 2,020/2,220	2,075			
Platform height	1,820/2,020/2,220	1,808	1,808	

*Load centre

For Every Application...

In addition to the additional features mentioned above, you can optionally equip your **DAUTEL LIFTER/FOLDER/SLIDER** according to your needs, e.g.:

1. Towing bracket for ball coupling

DL 500K D-value 17.5 kN

DL 750/950 D-value 20.5 kN

DFL 1000 D-value 23.5 kN

DL 1000 – 3000S D-value 25.4 kN

DF 1000 – 1500L D-value 20.5 kN

Step on the underride protection

2. Protection angle piece for indicator lights on the platform

3. Mechanical support

4. Hydraulic support with safety circuit. Hydraulic support automatically retracts approx. 15 ° before closing the platform

5. Bio-hydraulic oil Panolin Synt 15

6. Noise-damping synthetic platform coating

7. Fixorand profile

8. Powerful 3-kW motor for DL 2000S/T

9. Thanks to a variety of measures, **DAUTEL LIFTER, FOLDER** and **SLIDER** meet the requirements according to ADR, class OX through EX/III. Please send us your enquiry.

10. Clamp-on, the bolt-on mounting technology for **DAUTEL LIFTER** DL 1500S – 2000S on the longitudinal beam flanges of semi-trailers

11. Loading ramps for driving onto the side of pavements

12. Sealing system for bodies

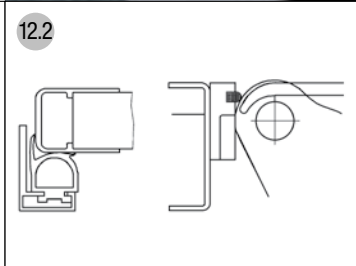
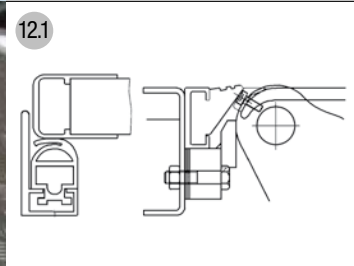
Variant 1: With rubber wedge profile and stops for lifting arms

Variant 2: With aluminium stop profile below with lip seal

13. Low-temperature design

14. Interface for „Scharfenberger system“

...an Appropriate Solution



For Every Use in Every Industry



Recommended HGV Equipment

The structural possibilities of a tail lift are regulated in the guidelines of the HGV manufacturer. These are to be complied with by the body manufacturer during assembly.

In order to ensure a reliable power supply for the **DAUTEL LIFTER/FOLDER/SLIDER** we recommend the following electrical equipment:

Alternator:

- At least 14V/45A or 28V/27A

- Exclusively urban/metropolitan areas approx. 14V/80A or 28V/55A
- Tractors with semi-trailers/trailers 28V/55A

Battery capacity

Load capacity kg	light use	heavy use
500 – 1000	12V, 1x110 Ah	not recommended
1000 – 1500	12V, 1x143 Ah	12V, 1x180 Ah
1000 – 1500	24V, 2x110 Ah	24V, 2x143 Ah
1500 – 2000	24V, 2x143 Ah	24V, 2x170 Ah
2000 – 3000	24V, 2x200 Ah	24V, 2x200 Ah

If other heavy power consumers are installed on the vehicle apart from the **DAUTEL LIFTER**, *FOLDER* and *SLIDER*, their power consumption must also be considered.

If an HGV manufacturer offers a preliminary setup for tail lift use, your HGV should be equipped that way, e.g. Code MAN 320EC, Mercedes-Benz E33.

To Request a Quote

We would be glad to make you a non-binding offer. For this, we need the following information from you:

Desired tail lift equipment

- **DAUTEL LIFTER**
- **DAUTEL FOLDER**
- **DAUTEL SLIDER**
- Load capacity
- Platform length
- Anti-roll protections; if yes, wheel diameter of the rolling containers and their size LxW

- Towing bracket for ballhead coupling
- Possible specific equipment

Required HGV information:

- HGV make and type
- Wheelbase
- Body, e.g. flatbed, van, BDF interchangeable body
- Body length and width
- Trailer coupling yes/no

From this information we can quickly prepare an offer for you.

You can reach us at:

Telephone: +49 7131 407-155/-156

Fax: +49 7131 407-107

E-mail: info@dautel.de

Technical specifications, net weight in kg of the **DAUTEL LIFTER**

Platforms Types K and N												
DAUTEL LIFTER DL	750A	750B/C	950A	950B/C	1000	1500L	1500S	2000L	2000S	2500L	2000T	2500T
Platform plan 1,605 mm	235	240	245	255								
Platform plan 1,805 mm		250										
Platform K 1,600 mm					340	395						
Platform K 1,800 mm					350	405	455	465	505		615	
Platform K 2,000 mm							470	480	520		620	
Platform K 2,100 mm						425	475	485	525		625	
Platform K 2,200 mm							490	500	535		635	
Platform K 2,300 mm							495	505	545		645	
Platform K 2,400 mm							505	515	550		650	
Platform N 1,600 mm					345	360						
Platform N 1,800 mm					350	370	455	465	510	560	620	630
Platform N 2,000 mm							465	475	515	565	625	635
Platform N 2,100 mm					380	395	470	480	520	570	630	640
Platform N 2,200 mm							480	490	530	580	640	650
Platform N 2,300 mm							485	495	535	585	645	655
Platform N 2,400 mm							490	500	540	590	650	660

Technical specifications, net weight in kg of the **DAUTEL LIFTER**

Platforms Type P								
DAUTEL LIFTER DL	1500S	2000L	2000S	2500L	2500S	3000S	2000T	2500T
1,805 mm	460	470	515	565	595	595	640	650
2,005 mm	470	480	525	575	615	615	650	660
2,105 mm	475	485	530	580	625	625	655	665
2,205 mm	485	495	540	590	635	635	665	675
2,305 mm	490	500	545	595	645	645	670	680
2,405 mm	500	510	555	605	655	655	680	690
2,505 mm			565		665	665	690	
2,605 mm			570		675	675	695	
2,705 mm			575		685	685	700	
2,805 mm			580		695	695	705	

Note:

The stated net weights are approximate values as we deliver the appropriate equipment with varying arm lengths and mounting plates for every mounting case..

Technical specifications, net weight in kg of the **DAUTEL FOLDER, SLIDER**

	DAUTEL FOLDER		DAUTEL SLIDER					
	1000	1500L	1500VAL	1500VA	2000VAL	2000VA	2500VA	3000VA
1,330 mm, 2-tlg.	390	395						
1,540 mm, 2-tlg.				585		600		
1,580 mm, 2-tlg.			480		490			
1,740 mm, 2-tlg.				595		610		
1,760 mm, 2-tlg.			490		500			
1,950 mm, 2-tlg.				605		620		
1,605 mm, 1-tlg.			465		475			
1,620 mm, 1-tlg.				610		625		
1,720 mm, 1-tlg.				615		630		
1,808 mm, 1-tlg.			475		485			
1,820 mm, 1-tlg.				620		635	675	675
2,020 mm, 1-tlg.							685	685
2,220 mm, 1-tlg.							695	695

Note:

The stated net weights are approximate values as we deliver the appropriate equipment with varying arm lengths and mounting plates for every mounting case.

Technical specifications, net weight in kg of the **DAUTEL SLIDER**

DAUTEL SLIDER	1500VBL	2000VBL	2000VB	3000VB	1500/2000VT	1500/2000VT XXL
1,808 mm, 1-tlg.	480	495				
1,620 mm, 1-tlg.					565	
1,720 mm, 1-tlg.					570	1,200
1,820 mm, 1-tlg.			615	655	575	
2,020 mm, 1-tlg.			625	665		
2,220 mm, 1-tlg.			635	675		
<p>Note: The stated net weights are approximate values as we deliver the appropriate equipment with varying arm lengths and mounting plates for every mounting case.</p>						

DAUTEL Your Partner

DAUTEL GmbH

Dieselstraße 33

74211 Leingarten

Germany

Telephone switchboard: +49 7131 407-0

Sales telephone: +49 7131 407-155 and -156

Fax: +49 7131 407-107

E-mail: info@dautel.de

Internet: www.dautel.de

DAUTEL is certified in accordance with ISO 9001-2208.

Maintenance and service is done by more than 600 trained service-station in Germany and Europe.

Our service-team in Leingarten is available:

Monday to Friday from 7.15 am to 6.00 pm and

Saturday from 7.15 am to 12.00 am.

The photos also show special equipment
which does not form part of the standard delivery range. 08/2014